

CITY OF WELLS

IN

PORTION OF SECTION 4, T.37 N., R. 62 E., M.D.B. & M.
ELKO COUNTY LIMITS

002-670

SEE RURAL MAP 008-350

SEE RURAL MAP 008-350

SEE SPECIAL LANDS MAP 008-34C

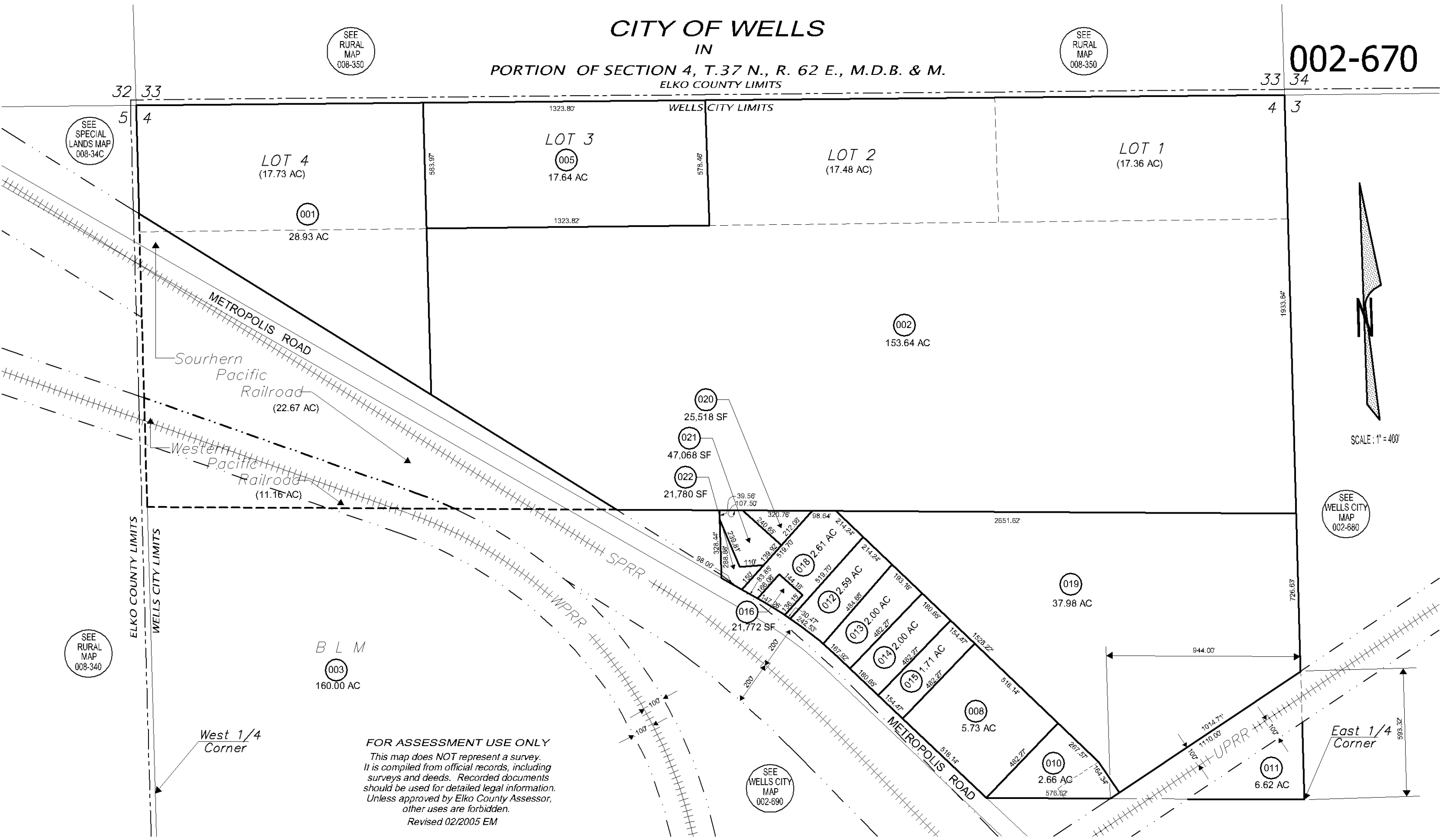
SEE RURAL MAP 008-340

SEE WELLS CITY MAP 002-680

SEE WELLS CITY MAP 002-690



SCALE: 1" = 400'



FOR ASSESSMENT USE ONLY
This map does NOT represent a survey.
It is compiled from official records, including
surveys and deeds. Recorded documents
should be used for detailed legal information.
Unless approved by Elko County Assessor,
other uses are forbidden.
Revised 02/2005 EM