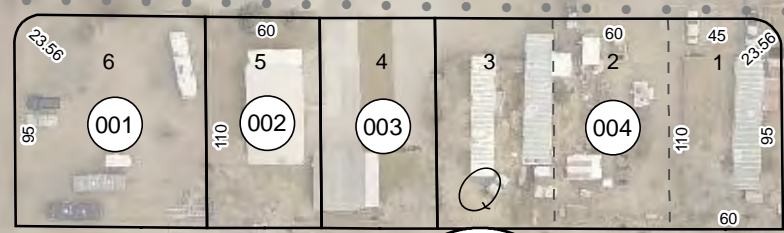


002-640

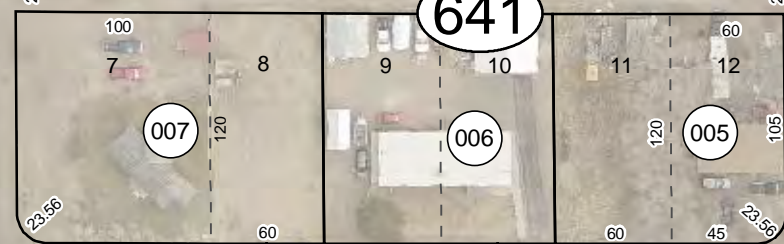
60

61

FIRST ST.



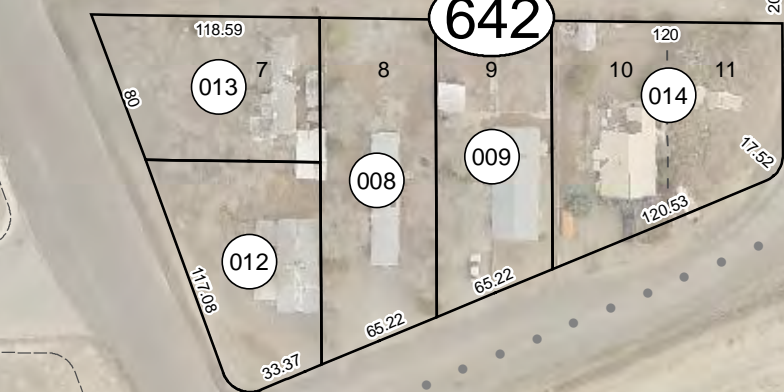
641



BAKER ST.



642



SHOSHONE ST.

EDGEWOOD ST.

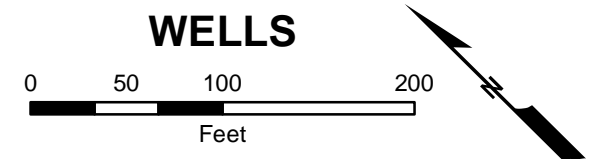
63

74

SKYLINE TERRACE NO. 2

DOVER ST.

For assessment use only, does not represent a survey, no liability for accuracy is assured. Other uses forbidden unless approved by Elko County Assessor.



Revision Docs. Vacation Map #552348, 741757