

SEE WELLS CITY
MAP 002-570
for
SCHOOL PROPERTY
CONTINUATION

SEE
WELLS CITY
MAP
002-570
FA
SA

SA
TA

002-600

A
V
E
N
U
E

002
20,142 SF

BLOCK 8

605
ELKO COUNTY
SCHOOL DISTRICT

003
10,664 AC

BLOCK 9

FA
SA

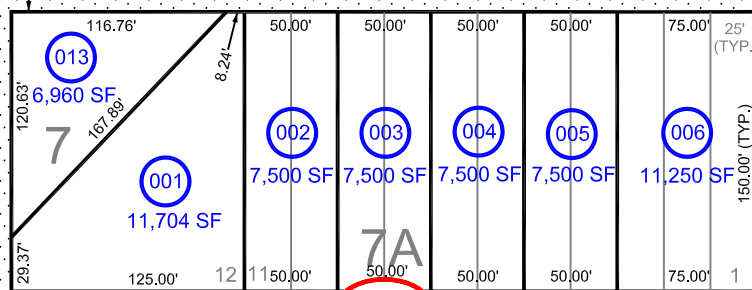
SEE
WELLS CITY
MAP
002-590

L
A
K
E

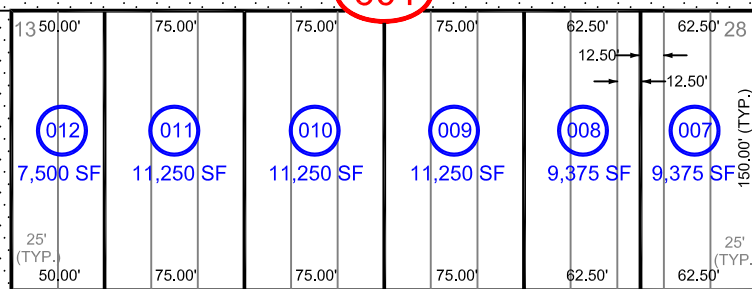
F I R S T S T R E E T

SEE
WELLS CITY
MAP
002-620

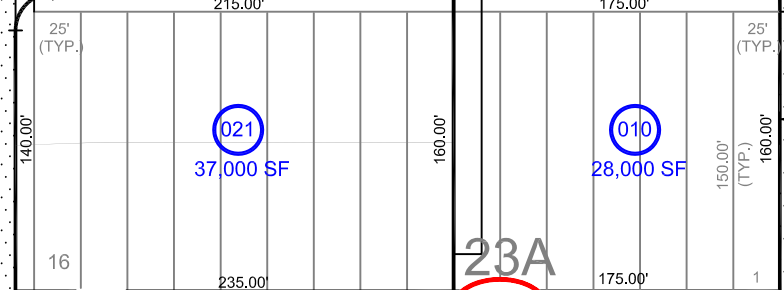
A
V
E
N
U
E



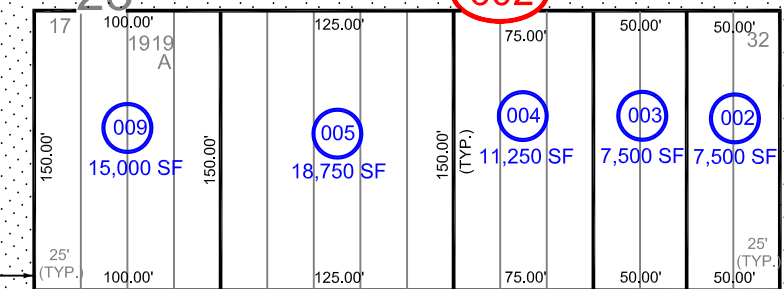
601



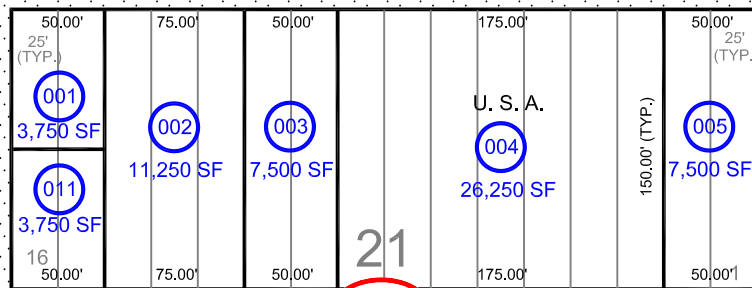
A
V
E
N
U
E



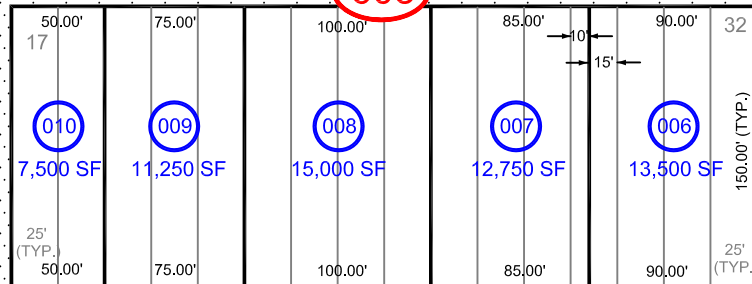
602



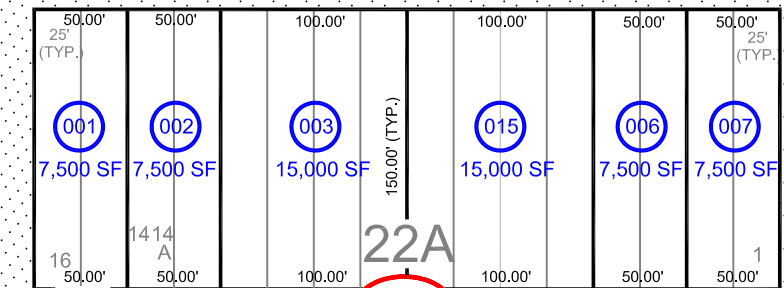
S E C O N D S T R E E T



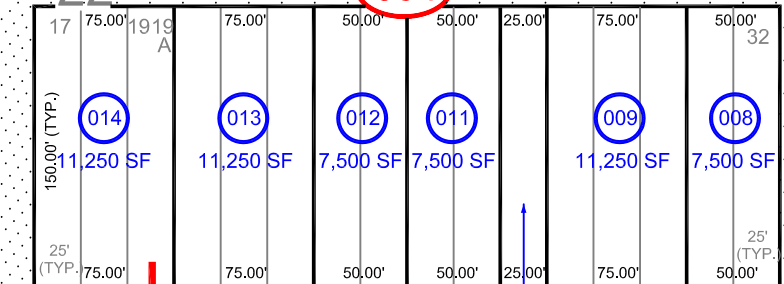
603



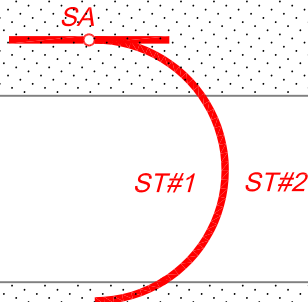
R
U
B
Y



604



F I R S T S T R E E T



SA
TA
ST#2

FA = FIRST ADDITION
SA = SECOND ADDITION
TA = THIRD ADDITION
ST#1 = SKYLINE TERRACE #1

ST#2 = SKYLINE TERRACE #2

Reference Documents:
ROS/BLA# 456016
Parcel Map# 679483, 697749

CITY OF WELLS
S 1/2 NE 1/4 SECTION 9
T. 37 N., R. 62 E., M. D. B. & M.
ELKO COUNTY, NEVADA

FOR ASSESSMENT USE ONLY

DOES NOT REPRESENT A SURVEY
NO LIABILITY FOR ACCURACY IS ASSURED
UNLESS APPROVED BY ELKO COUNTY ASSESSOR.
OTHER USES ARE FORBIDDEN

REVISED 05/11/2018 JLS

SCALE : 1" = 100'

SEE
WELLS CITY
MAP
002-610

SECTION 10
SECTION 9