

# CITY OF WELLS

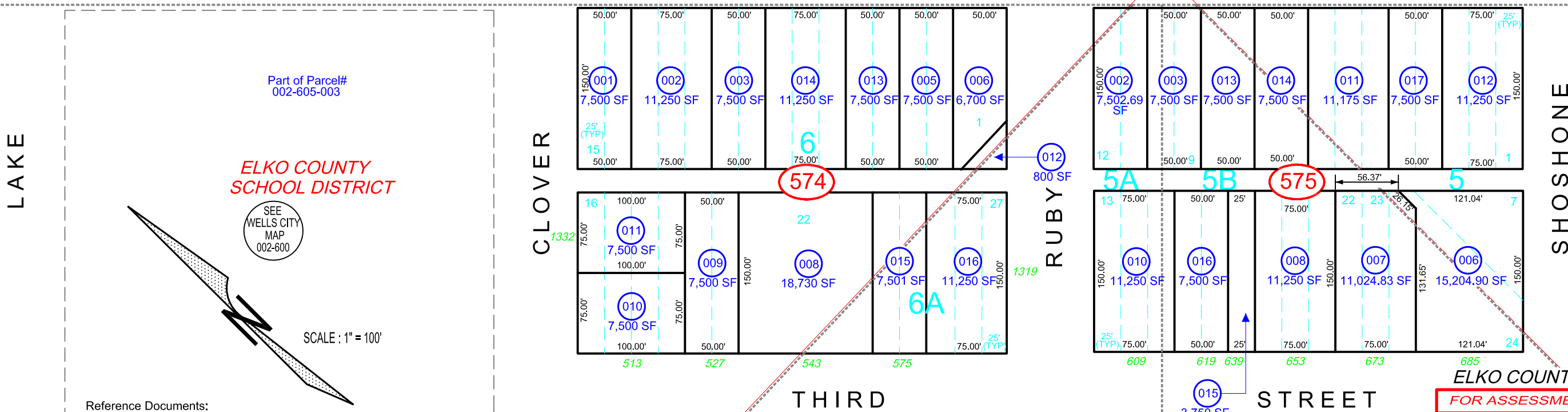
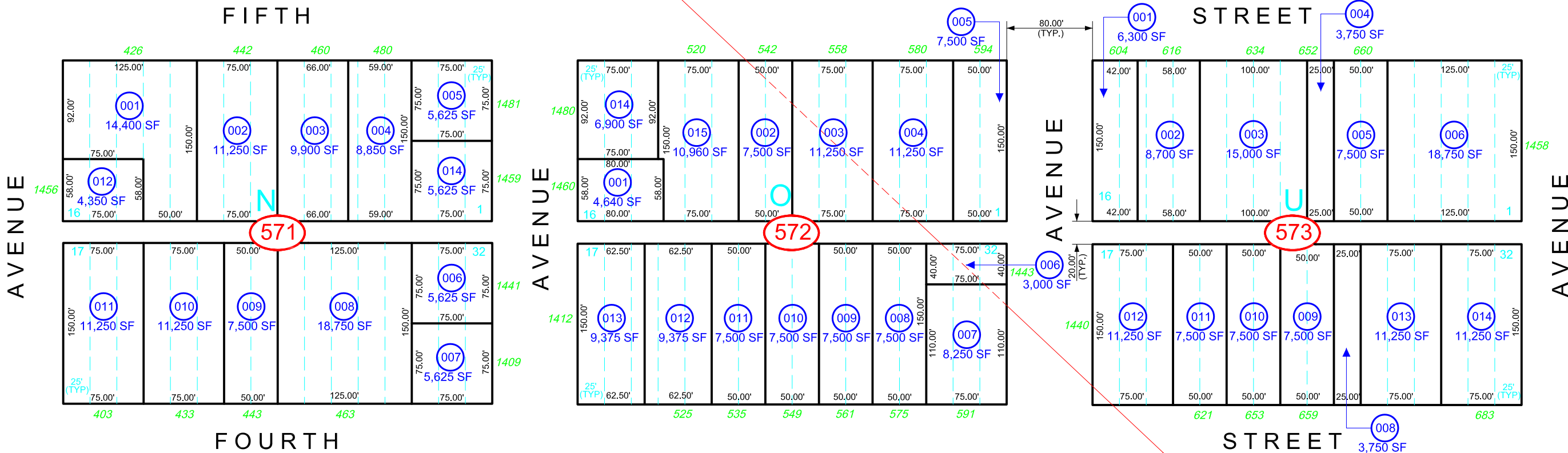
IN  
PORTION OF SECTIONS 9 & 10  
T. 37 N., R. 62 E., M. D. B. & M.

## 002-570

SEE  
WELLS CITY  
MAP  
002-540

SEE  
WELLS CITY  
MAP  
002-550

SECTION 10  
SECTION 9



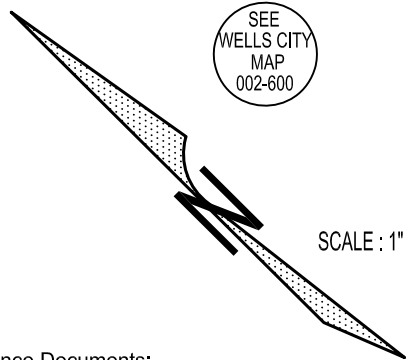
SEE  
WELLS CITY  
MAP  
002-560

SEE  
WELLS CITY  
MAP  
002-580

Part of Parcel#  
002-605-003

**ELKO COUNTY  
SCHOOL DISTRICT**

SEE  
WELLS CITY  
MAP  
002-600



Reference Documents:  
ROS/BLA# 553500  
Parcel Map# 679483

SEE  
WELLS CITY  
MAP  
002-600

SEE  
WELLS CITY  
MAP  
002-610

**ELKO COUNTY, NEVADA**  
**FOR ASSESSMENT USE ONLY**

This map does NOT represent a survey. It is compiled from official records, including surveys and deeds. Recorded documents should be used for detailed legal information. Unless approved by Elko County Assessor, other uses are forbidden.

Revised 10/15/2013 JLS

FIRST ADDITION

SECOND ADDITION

THIRD ADDITION