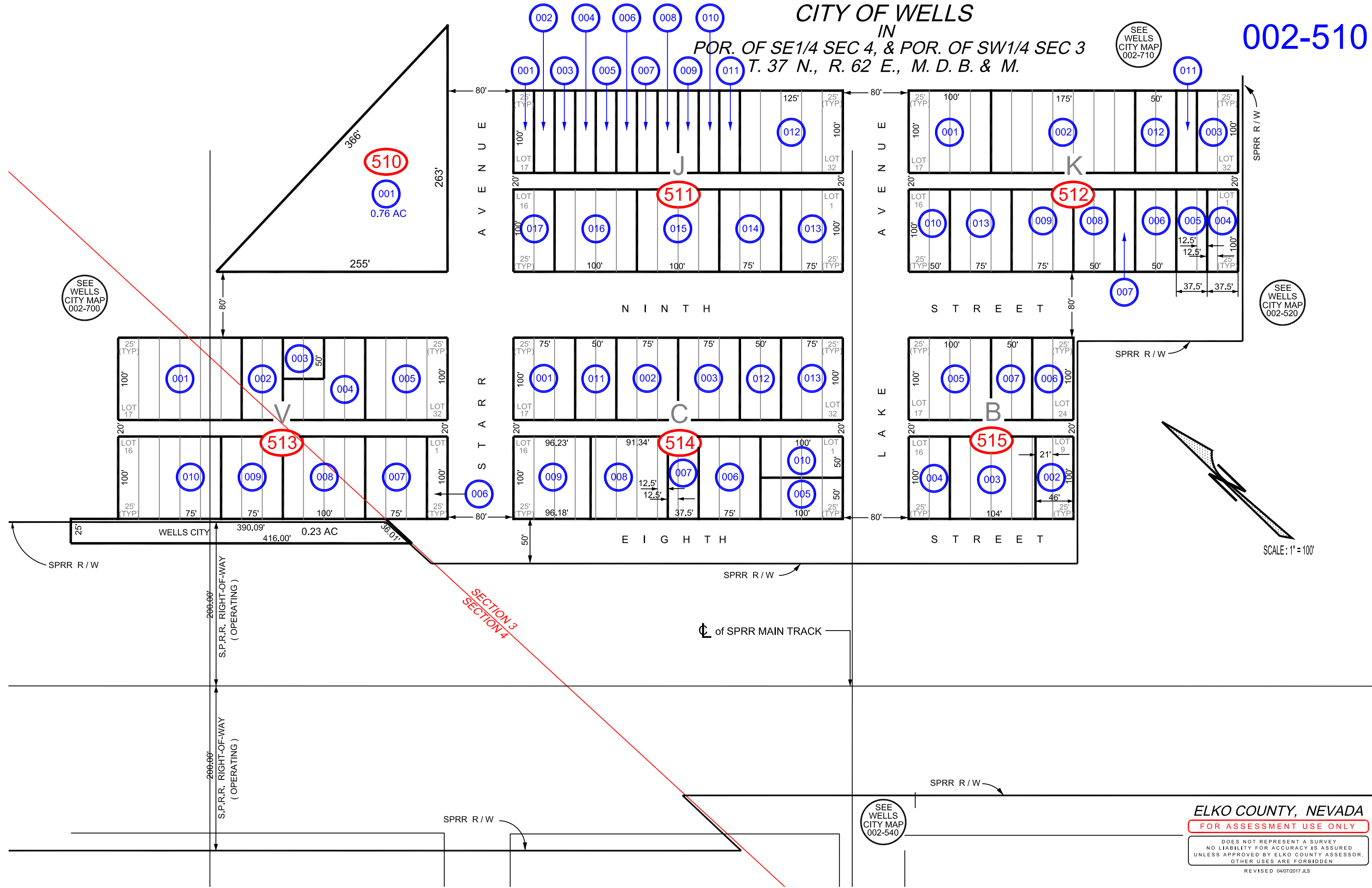


# CITY OF WELLS

IN  
POR. OF SE1/4 SEC 4, & POR. OF SW1/4 SEC 3  
T. 37 N., R. 62 E., M. D. B. & M.

SEE  
WELLS  
CITY MAP  
002-710

## 002-510



**ELKO COUNTY, NEVADA**  
FOR ASSESSMENT USE ONLY  
DOES NOT REPRESENT A SURVEY  
NO LIABILITY FOR ACCURACY IS ASSURED  
UNLESS APPROVED BY ELKO COUNTY ASSESSOR,  
OTHER USES ARE FORBIDDEN  
REVISED 04/07/2017 JLS