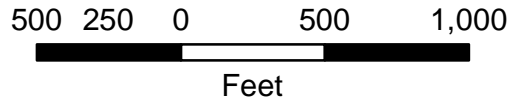


Legend

Plat 230

- Page 1
- Page 2

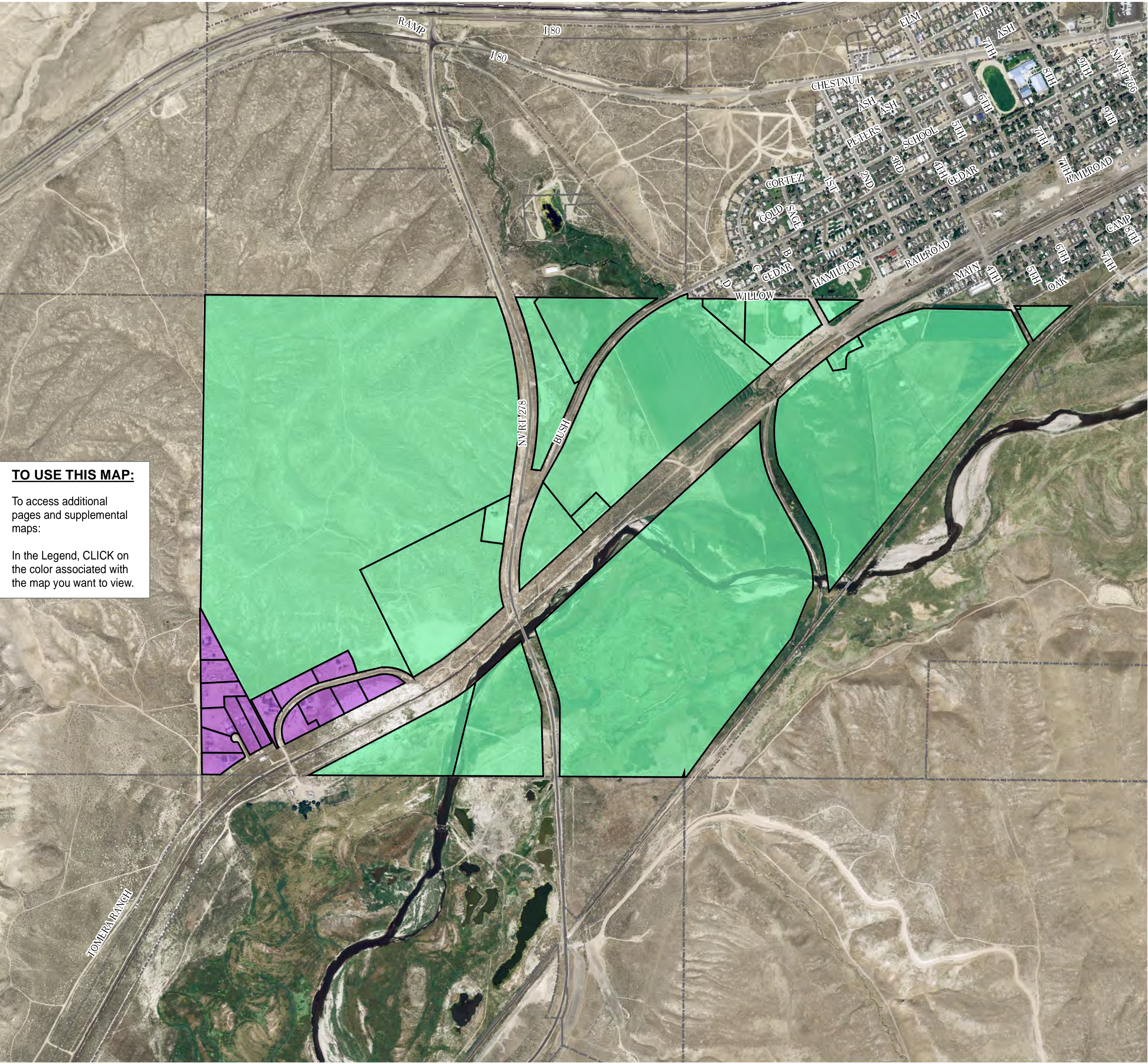


This map does NOT represent a survey. It is compiled from official records, including surveys and deeds. Recorded documents should be used for detailed legal information. Unless approved by Elko County Assessor, other uses are forbidden.

FOR ASSESSMENT USE ONLY

Background DRG was downloaded from the W. M. Keck Earth Sciences & Mining Research Information Center.

Last Update 08/12/2015 JLS



TO USE THIS MAP:
 To access additional pages and supplemental maps:
 In the Legend, CLICK on the color associated with the map you want to view.

TOMERA RANCH

RAMP 180 180
 CHESTNUT
 ASH
 PETERS
 SCHOOL
 5TH
 6TH
 7TH
 8TH
 9TH
 NV RT 206
 CORTEZ
 GOLD SAGE
 1ST
 2ND
 3RD
 4TH
 CEDAR
 7TH RAILROAD
 CEDAR
 HAMILTON
 RAILROAD
 MAIN
 4TH
 5TH
 6TH
 7TH
 OAK
 CAMP