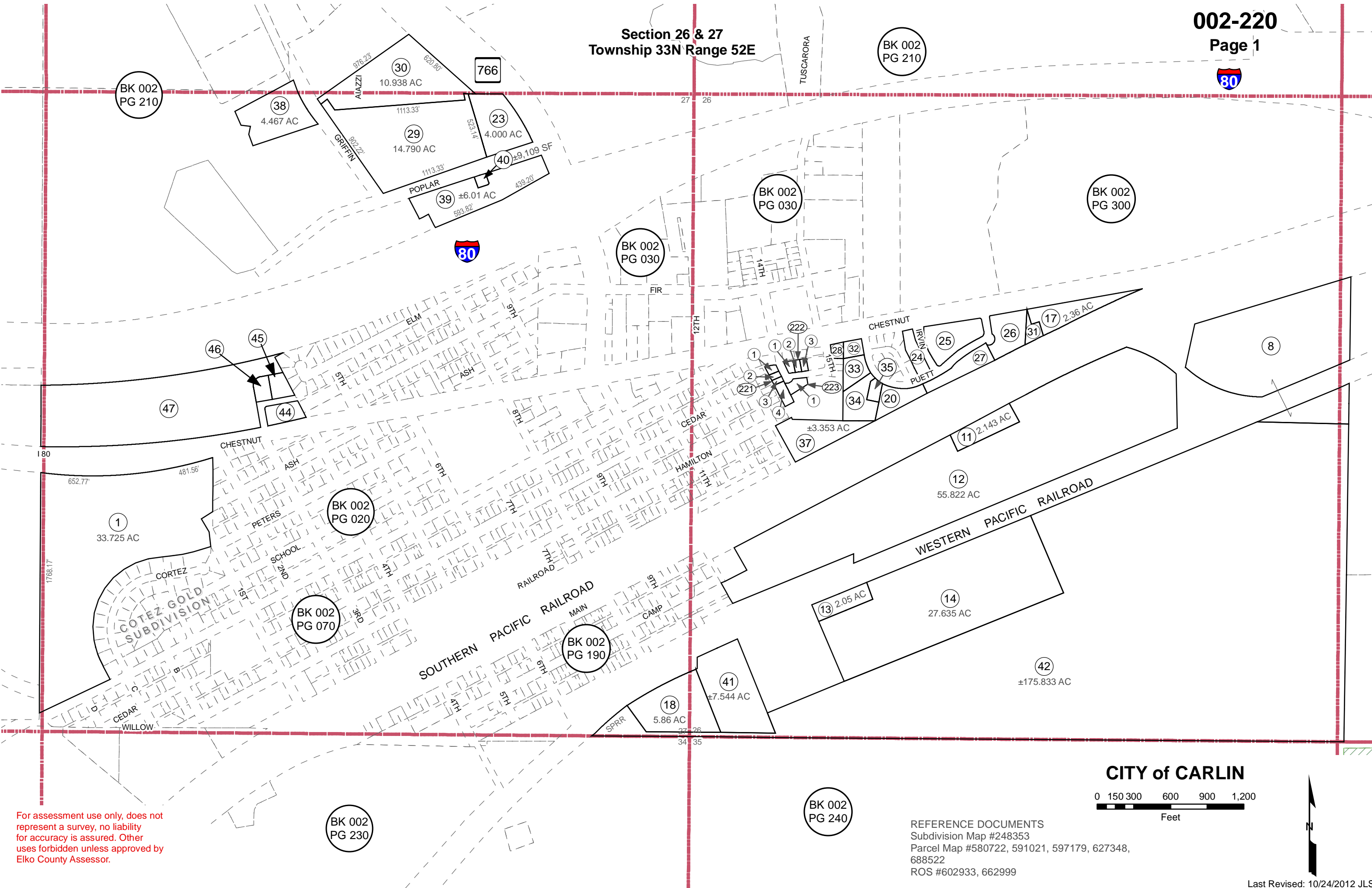
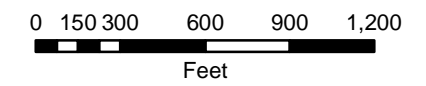


Section 26 & 27  
Township 33N Range 52E



For assessment use only, does not represent a survey, no liability for accuracy is assured. Other uses forbidden unless approved by Elko County Assessor.

CITY of CARLIN



REFERENCE DOCUMENTS  
Subdivision Map #248353  
Parcel Map #580722, 591021, 597179, 627348, 688522  
ROS #602933, 662999

