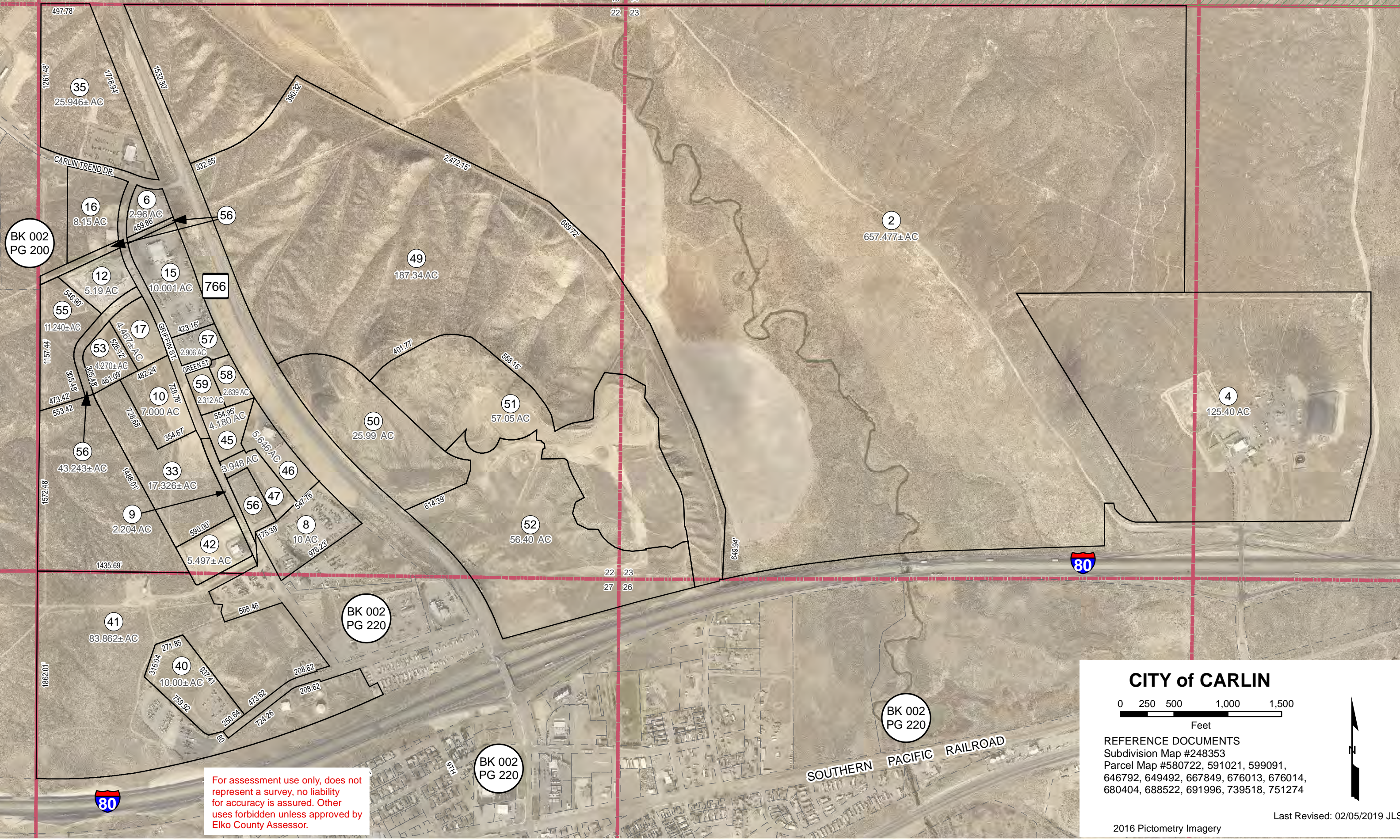


BK 005  
PG 060

Section 22, 23 & 27  
Township 33N Range 52E

002-210



BK 002  
PG 200

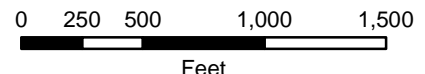
BK 002  
PG 220

BK 002  
PG 220

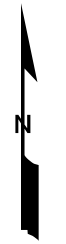
BK 002  
PG 220

For assessment use only, does not represent a survey, no liability for accuracy is assured. Other uses forbidden unless approved by Elko County Assessor.

CITY of CARLIN



REFERENCE DOCUMENTS  
 Subdivision Map #248353  
 Parcel Map #580722, 591021, 599091,  
 646792, 649492, 667849, 676013, 676014,  
 680404, 688522, 691996, 739518, 751274



Last Revised: 02/05/2019 JLS

2016 Pictometry Imagery