

CITY OF CARLIN
IN
PORTION OF SECTION 27
T. 33 N., R. 52 E., M.D.B. & M.

002-080

SEE CARLIN CITY MAP 002-010

PETERS STREET

STREET

STREET

STREET

STREET

SIXTH STREET

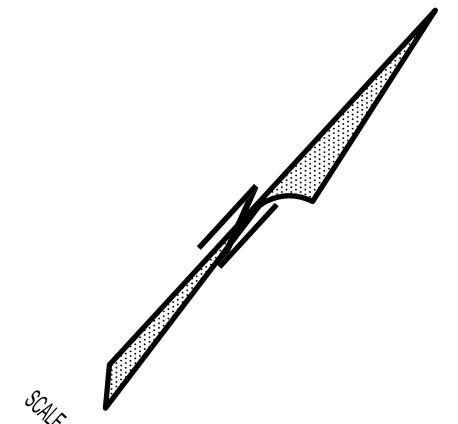
EIGHT STREET

FORMER U.S. 40
710.00'

ELKO COUNTY SCHOOL DISTRICT

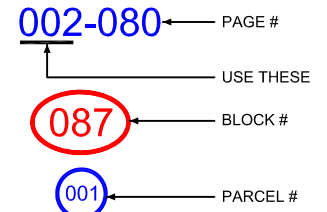
080

001
10.00 AC



NOTE:
P = PETERS SUBDIVISION

GENERAL NOTE:
PARCEL NUMBERS ARE FOUND AS FOLLOWS:
EXAMPLE APN : 002 - 087 - 001



ELKO COUNTY, NEVADA

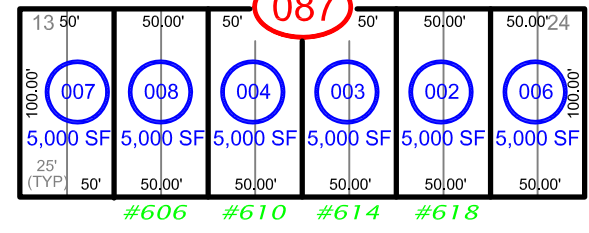
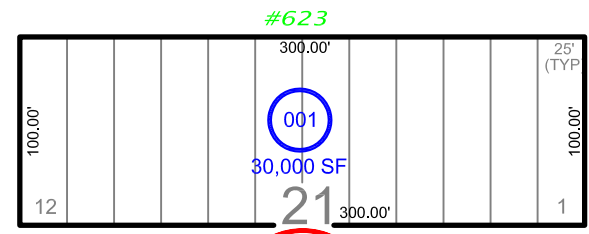
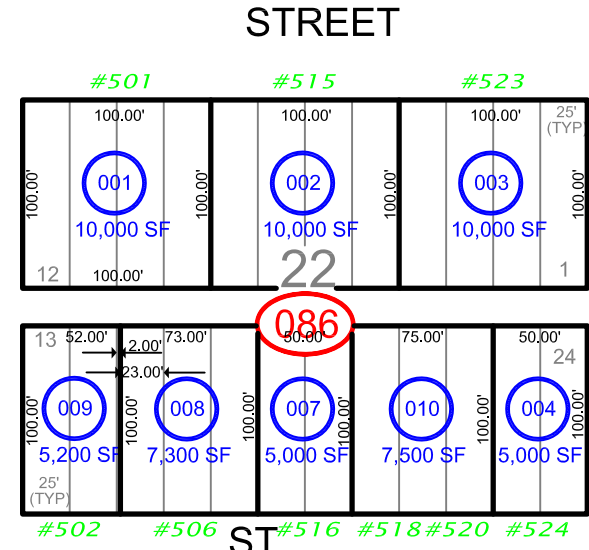
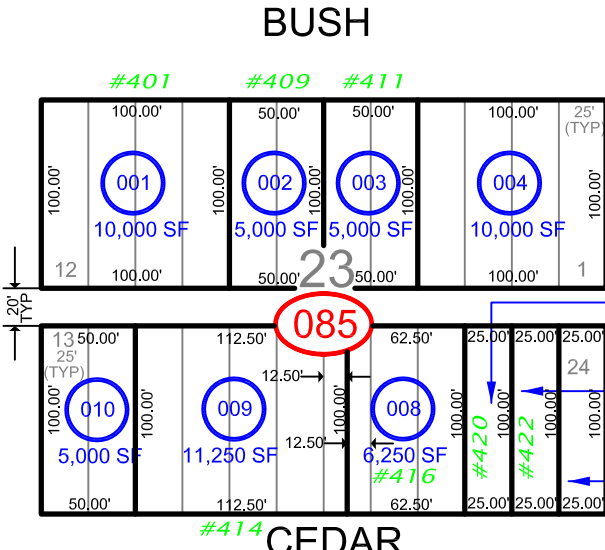
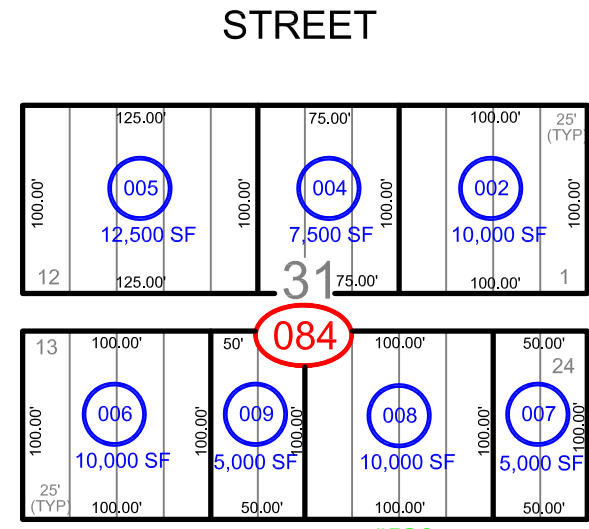
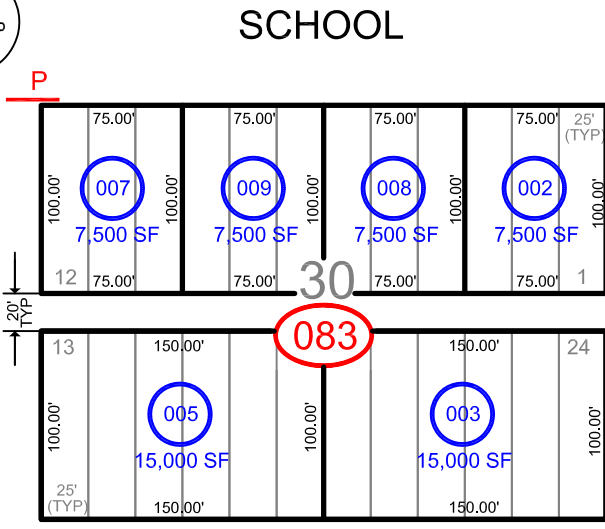
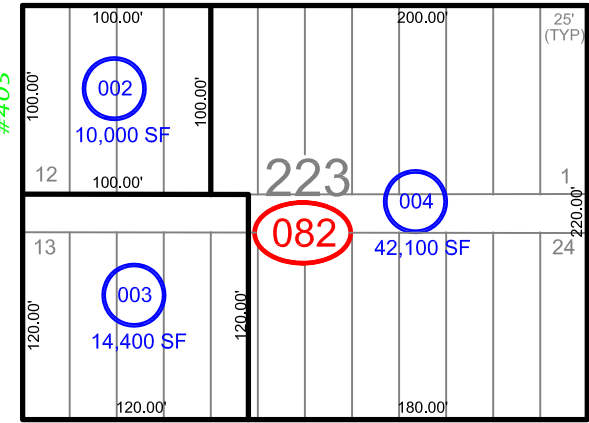
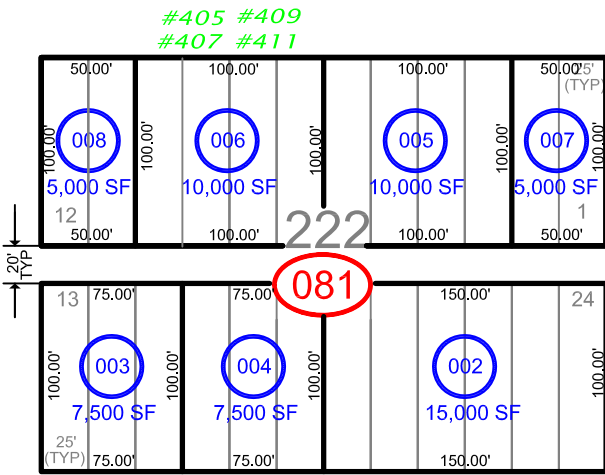
FOR ASSESSMENT USE ONLY

This map does NOT represent a survey. It is compiled from official records, including surveys and deeds. Recorded documents should be used for detailed legal information. Unless approved by Elko County Assessor, other uses are forbidden.

Revised 01/03/2013 JLS

SEE CARLIN CITY MAP 002-070

SEE CARLIN CITY MAP 002-090



SEVENTH STREET

SEE CARLIN CITY MAP 002-090