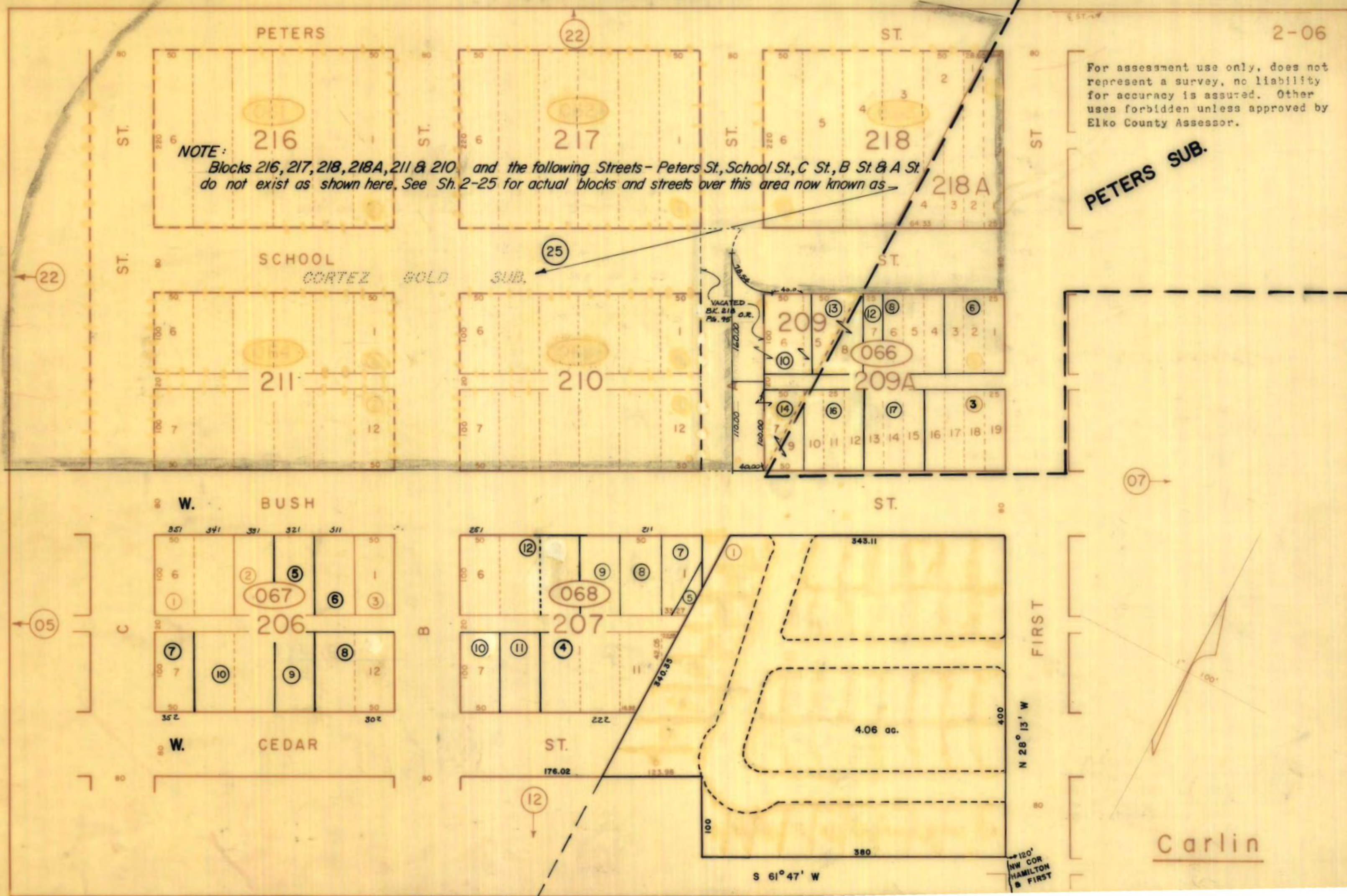


For assessment use only, does not represent a survey, no liability for accuracy is assured. Other uses forbidden unless approved by Elko County Assessor.

PETERS SUB.

NOTE:

Blocks 216, 217, 218, 218A, 211 & 210 and the following Streets - Peters St., School St., C St., B St. & A St. do not exist as shown here. See Sh. 2-25 for actual blocks and streets over this area now known as



N 28° 13' W
120' NW COR HAMILTON & FIRST

S 61° 47' W

Carlin