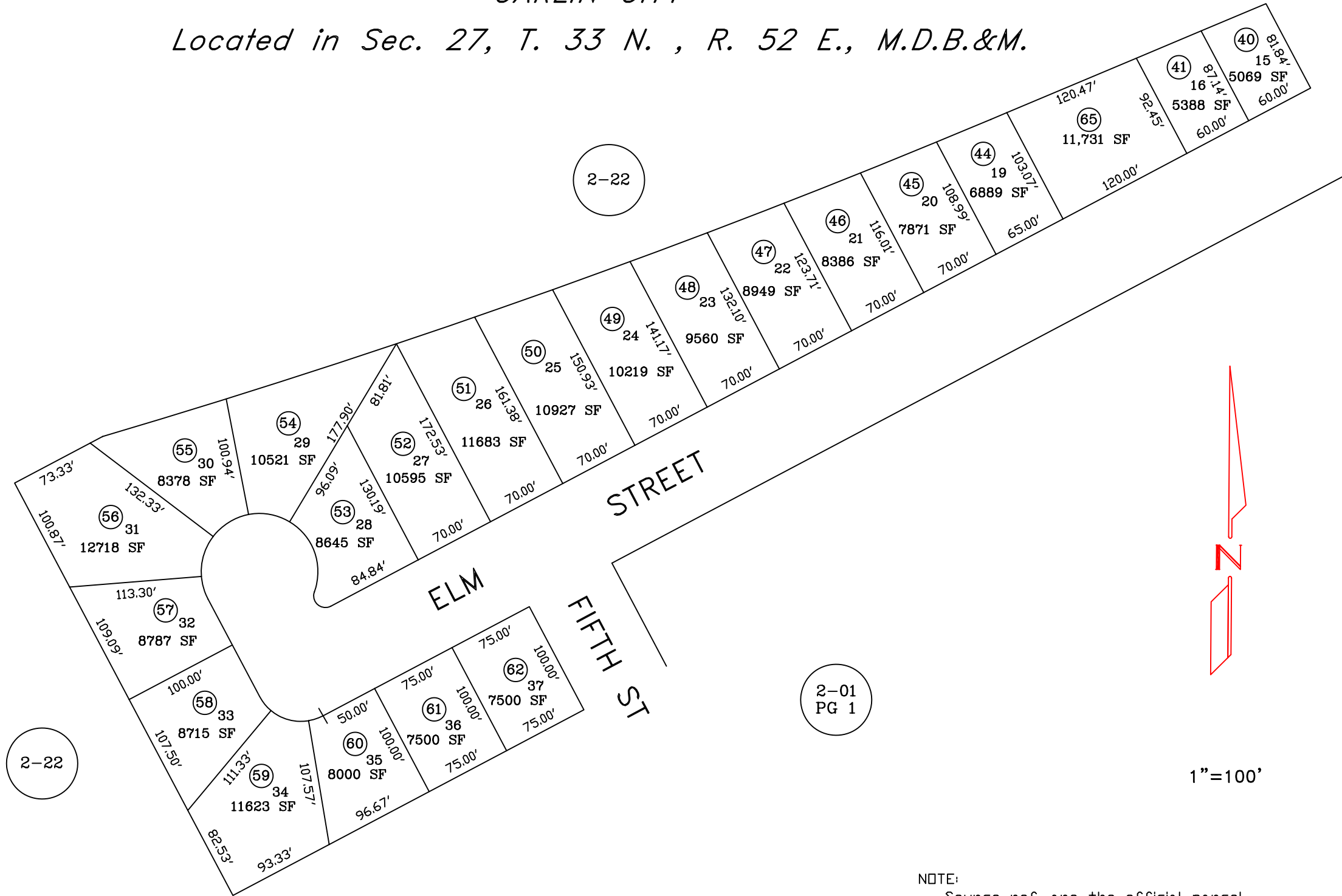


CARLIN CITY

Located in Sec. 27, T. 33 N. , R. 52 E., M.D.B.&M.

2-010  
pg. 2



FOR ASSESSOR'S USE ONLY  
 DOES NOT REPRESENT A SURVEY. NO LIABILITY FOR  
 ACCURACY IS ASSURED.  
 Other uses forbidden unless  
 approved by County Assessor.

NOTE:  
 Source ref. are the official parcel  
 maps with File #'s 386012, 386013,  
 386014, 386015, 386016, 386017,  
 708602

LAST REVISED 02/23/2016 JLS  
 Carlin