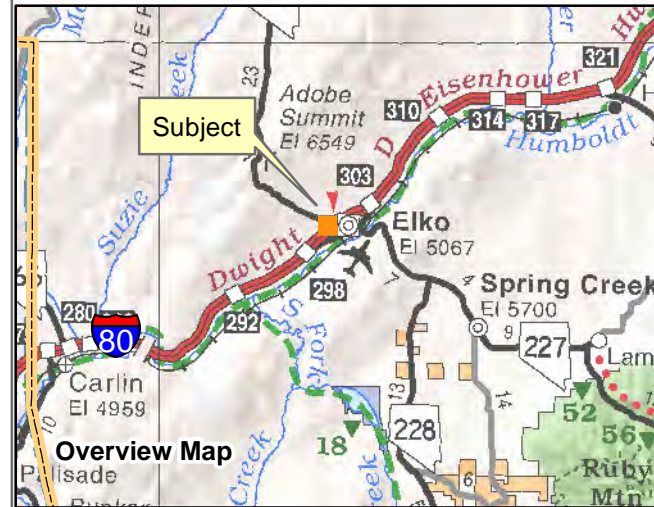
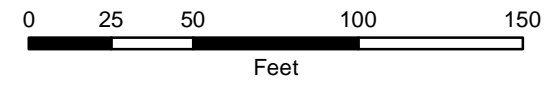


001-996
City of Elko
 Portion of Section 17
 Township 34N Range 55E
 of the Mount Diablo Meridian, Nevada



**Aspen Heights
 Subdivision**

- Legend**
- Subject Parcel
 - Parcel
 - Easement Line
 - Public Land

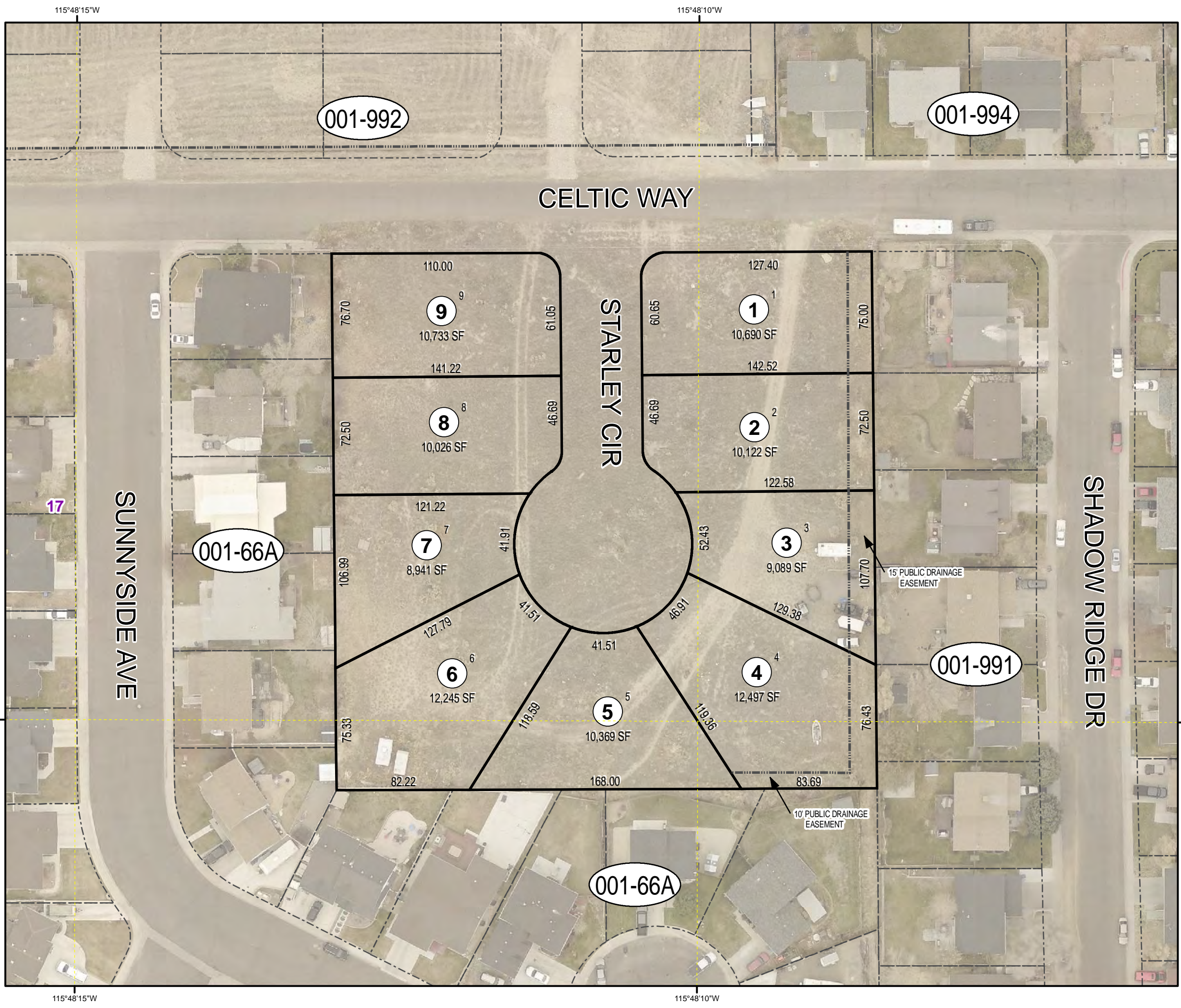


Reference Documents:
 781662

This map does NOT represent a survey. It is compiled from official records, including surveys and deeds. Recorded documents should be used for detailed legal information. Unless approved by Elko County Assessor, other uses are forbidden.

FOR ASSESSMENT USE ONLY

Background image - 2019 Pictometry Flyover
 Product of GIS
 Last Update 02/16/2021 JLS



115°48'15"W
 40°50'0"N
 115°48'15"W

115°48'10"W
 115°48'10"W