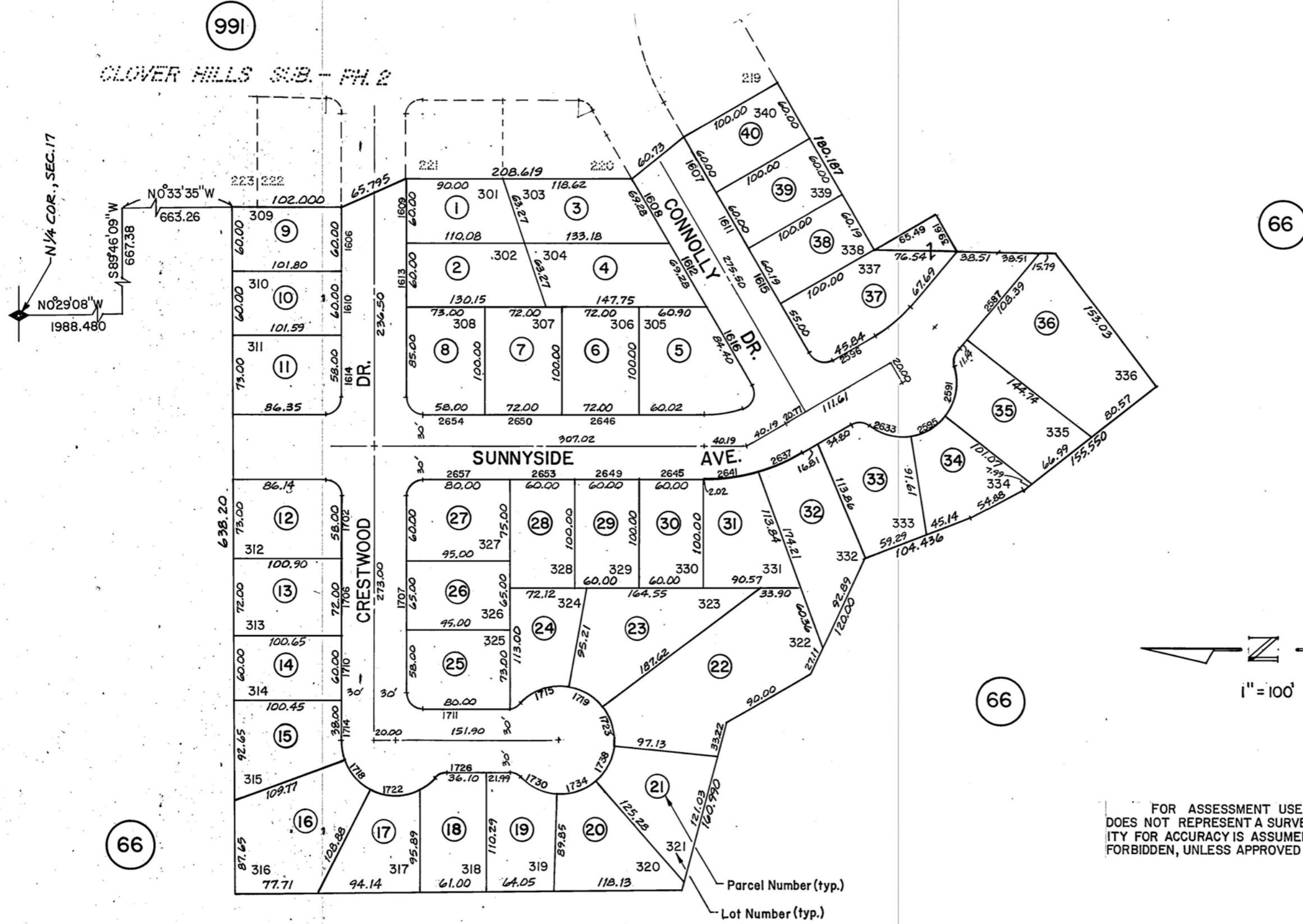


CLOVER HILLS SUBDIVISION, PH. 3
within W1/2 SE1/4 Sec.17, T.34N., R.55E., M.D.B.&M.

1-993



FOR ASSESSMENT USE ONLY.
 DOES NOT REPRESENT A SURVEY. NO LIABILITY FOR ACCURACY IS ASSUMED. OTHER USES FORBIDDEN, UNLESS APPROVED BY ASSESSOR.

Elko

REF. NOTE- See Official Subdivision Plat with File No 284716

REV. Dec. 8, 89 - KK