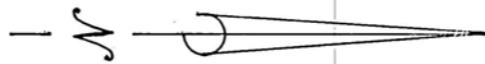


CLOVER HILLS SUBDIVISION

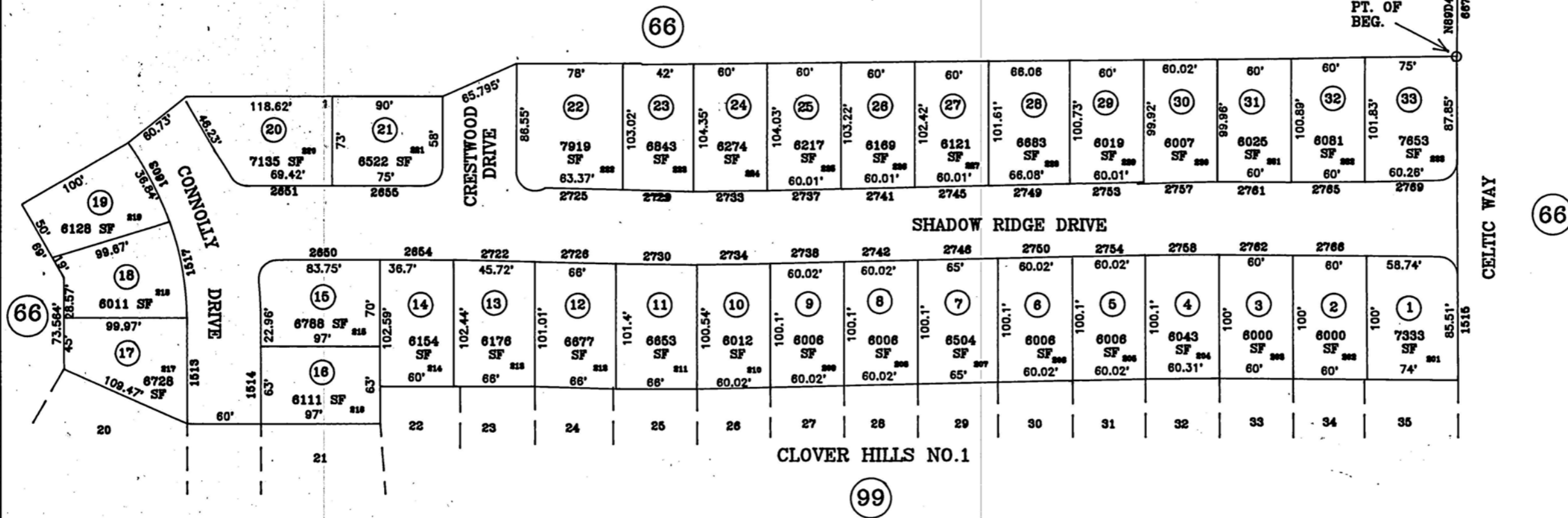
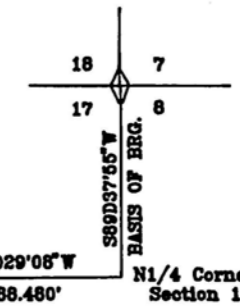
PHASE 2

LOCATED IN  
SECTION 17, T34N-R55E M.D.B.&M.  
CITY OF ELKO, NEVADA

01-991



1' = 100'



ASSESSMENT USE ONLY. DOES NOT  
REPRESENT A SURVEY. NO LIABILITY  
FOR ACCURACY IS ASSURED.

Source ref. is the official subdivision  
plat, File No. 278494