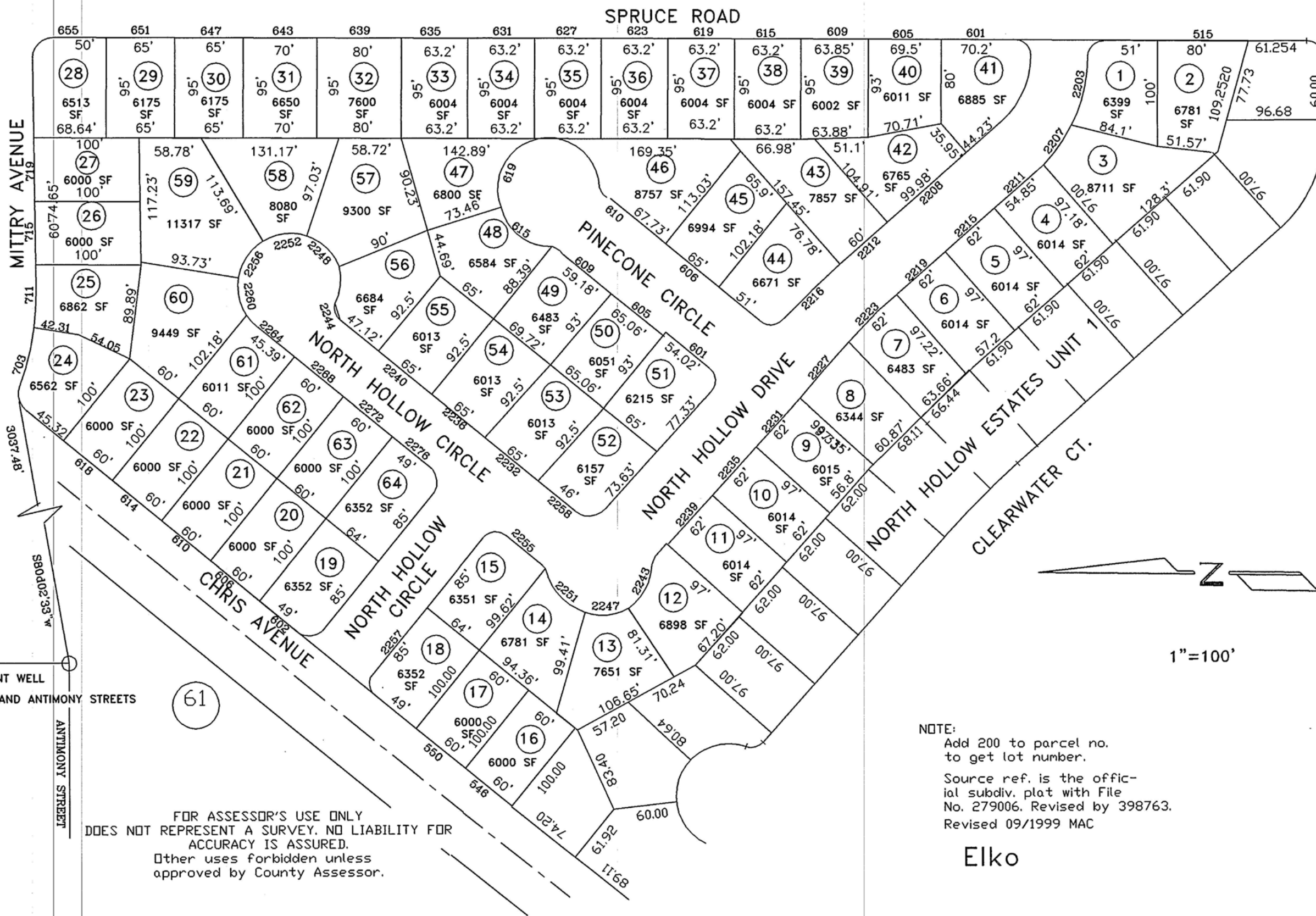


NORTH HOLLOW ESTATES, PHASE 2

1-972

Por. of E 1/2 Sec. 9, T. 34 N., R. 55 E., M.D.B.&M.

62



61

61

ARGENT AVENUE
 BRASS CAP IN MONUMENT WELL
 INTERSECTION OF ARGENT AND ANTIMONY STREETS

FOR ASSESSOR'S USE ONLY
 DOES NOT REPRESENT A SURVEY. NO LIABILITY FOR
 ACCURACY IS ASSURED.
 Other uses forbidden unless
 approved by County Assessor.

NOTE:
 Add 200 to parcel no.
 to get lot number.
 Source ref. is the offic-
 ial subdiv. plat with File
 No. 279006. Revised by 398763.
 Revised 09/1999 MAC

Elko