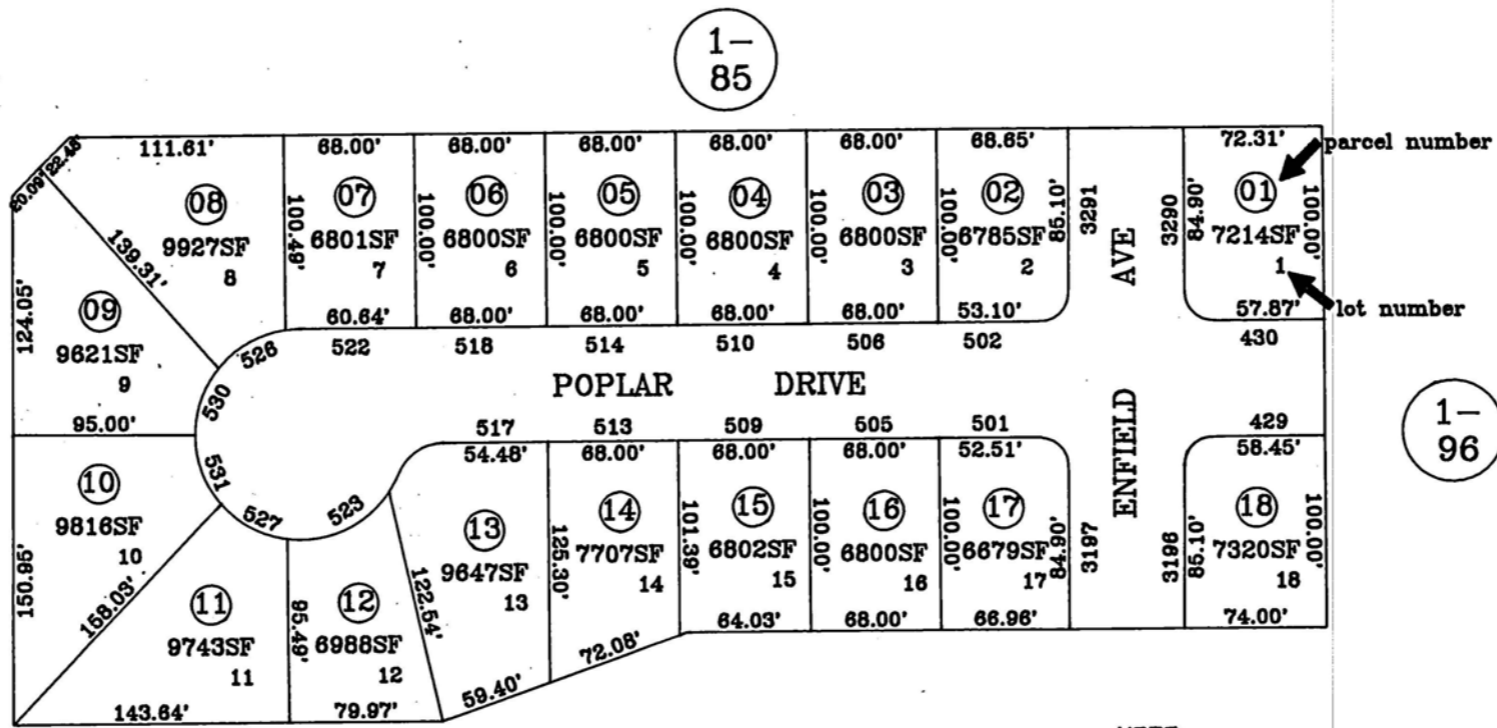


THE BLUFFS SUBDIVISION UNIT 5
 Located in Sec. 9, T. 34 N., R. 55 E., M.D.B.&M.

1-962



6-09J

1-85

1-96

SEE 1-61

FOR ASSESSOR'S USE ONLY
 DOES NOT REPRESENT A SURVEY. NO LIABILITY FOR
 ACCURACY IS ASSURED.
 Other uses forbidden unless
 approved by County Assessor.

NOTE:
 Source ref. is the official
 subdivision plat with File
 #383869.
 LAST REVISED 4/96LC

ELKO CITY

1"=100'