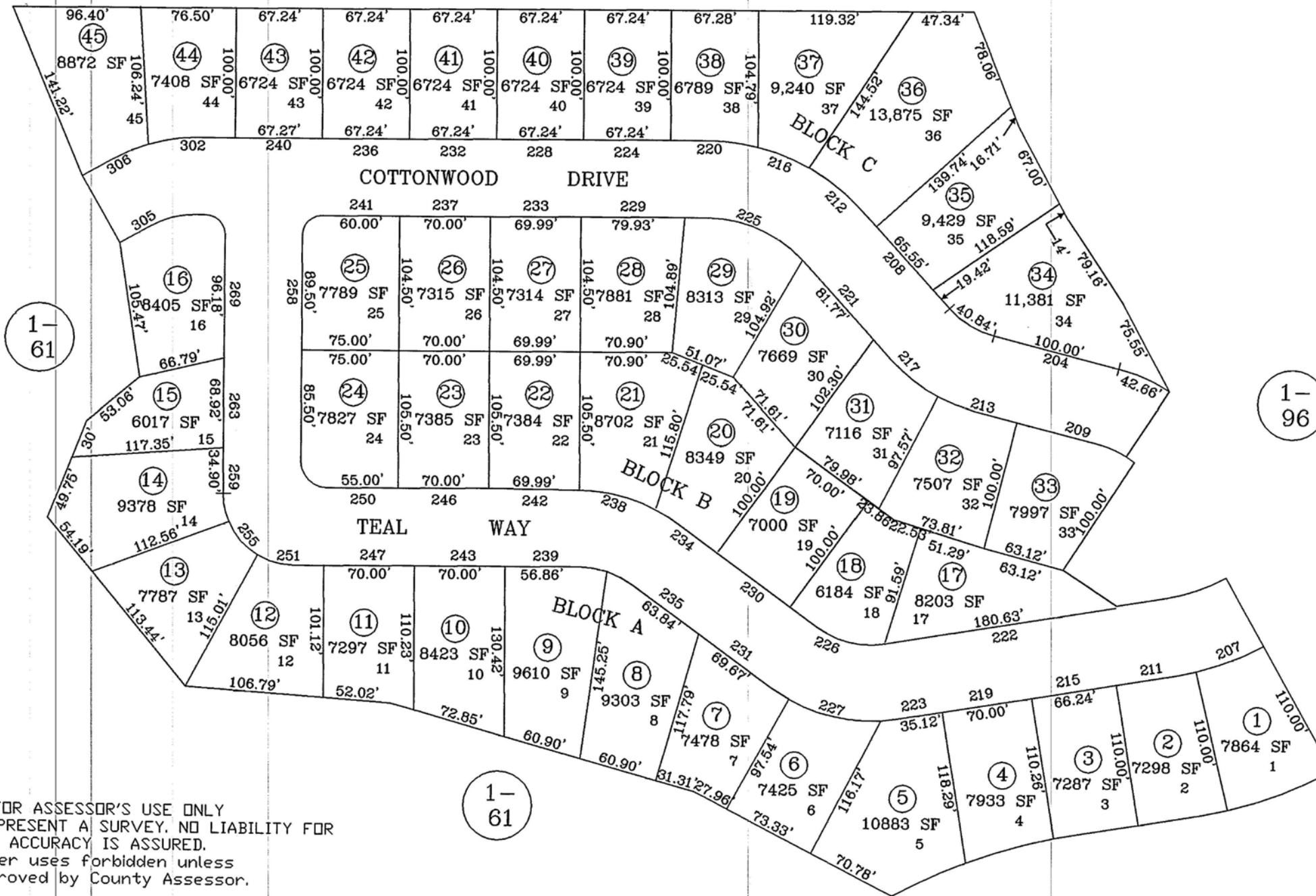


THE BLUFFS SUBDIVISION UNIT 4-PHASE 1
 Located in Sec. 9, T. 34 N., R. 55 E., M.D.B.&M.

1-961

1-96



1-61

1-96

1-61



1"=100'

FOR ASSESSOR'S USE ONLY
 DOES NOT REPRESENT A SURVEY. NO LIABILITY FOR
 ACCURACY IS ASSURED.
 Other uses forbidden unless
 approved by County Assessor.

NOTE:
 Source ref. is the official
 subdivision plat with File
 #367628
ELKO CITY
 Revised 2/2003 mac