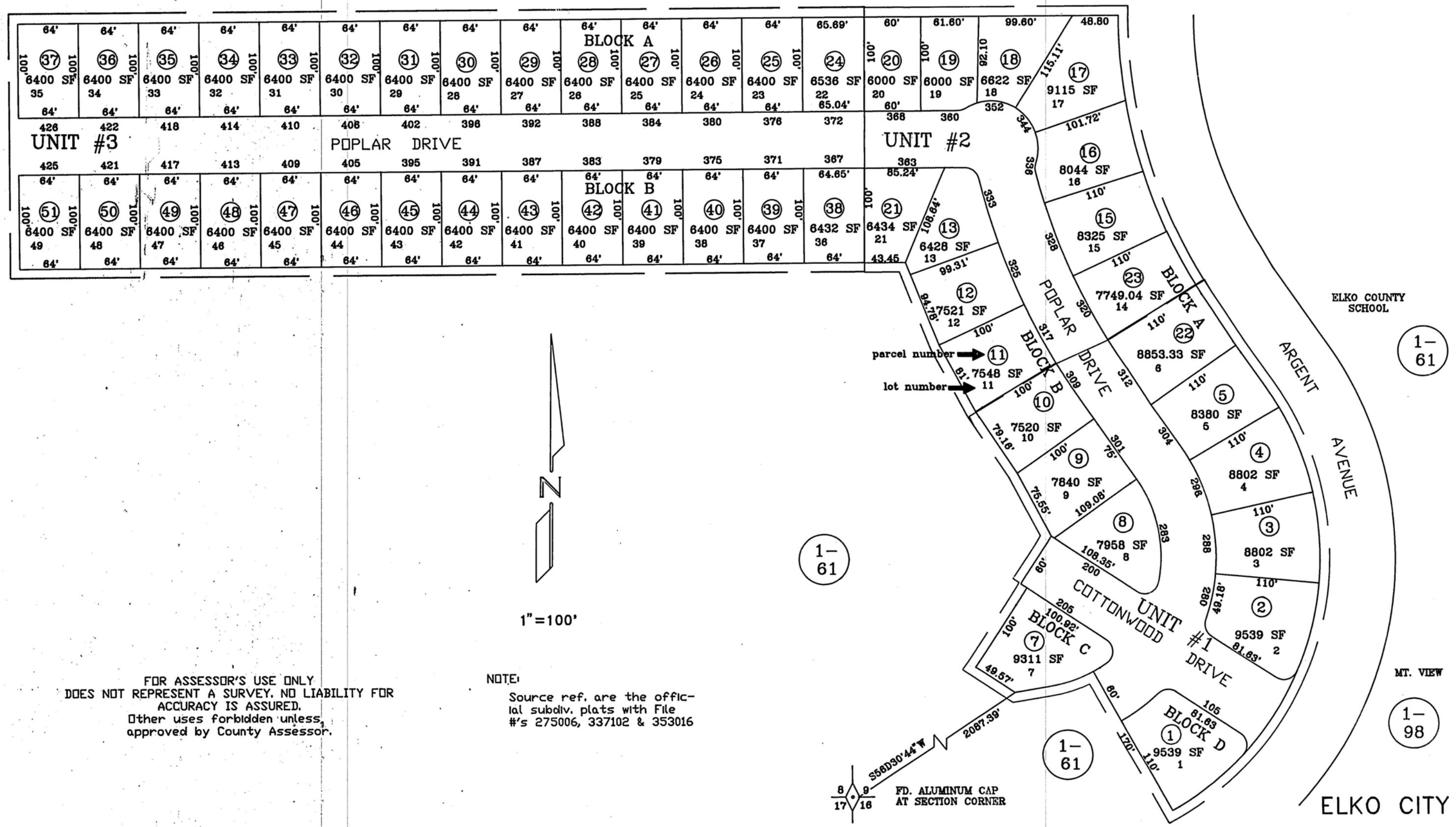


THE BLUFFS SUBDIVISION UNITS 1, 2 & 3
 Located in Sec. 9, T. 34 N., R. 55 E., M.D.B.&M.

AUROS
 1-85

1-96



FOR ASSESSOR'S USE ONLY
 DOES NOT REPRESENT A SURVEY. NO LIABILITY FOR
 ACCURACY IS ASSURED.
 Other uses forbidden unless
 approved by County Assessor.

NOTE:
 Source ref. are the offic-
 ial subdiv. plats with File
 #'s 275006, 337102 & 353016

8 9
 17 16
 S56D30'44"W 2067.39'
 FD. ALUMINUM CAP
 AT SECTION CORNER

1-61

1-61

1-61

1-98

ELKO CITY