

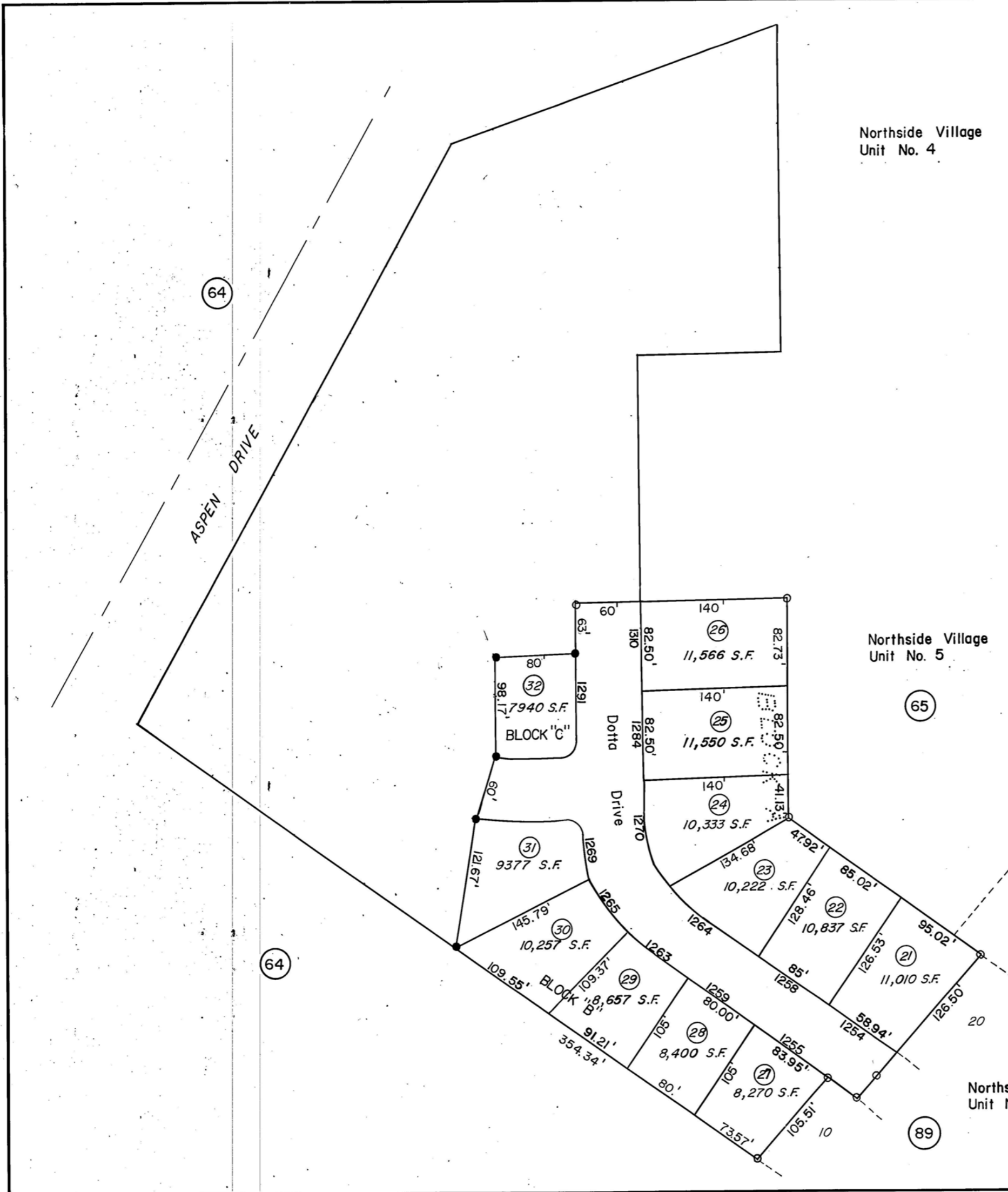


1" = 100'

Northside Village  
Unit No. 4

**LEGEND**

- 5/8" REBAR WITH R.L.S. CAP, TO BE SET.
- CALCULATED POINT, NOTHING SET.
- └ TYPICAL LOT CORNER - 5/8" REBAR WITH R.L.S. 5072 CAP, TO BE SET.



Northside Village  
Unit No. 5

Northside Village  
Unit No. 1

Northside Village  
Unit No. 7

ASSESSMENT USE ONLY. DOES NOT  
REPRESENT A SURVEY. NO LIABILITY  
FOR ACCURACY IS ASSURED.

# NORTHSIDE VILLAGE SUBDIVISION Unit No. 8

ELKO, ELKO COUNTY, NEVADA