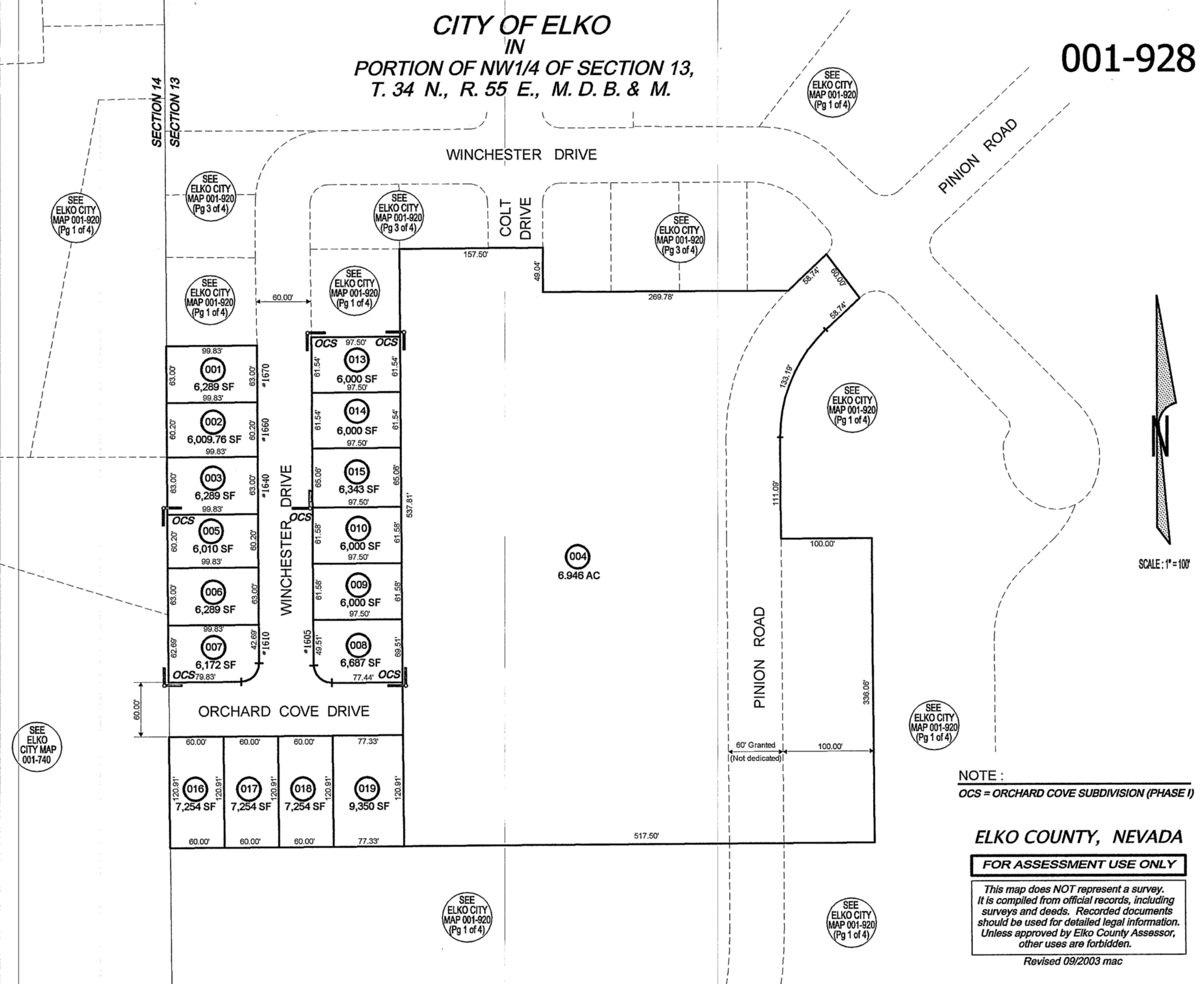


CITY OF ELKO
IN
PORTION OF NW1/4 OF SECTION 13,
T. 34 N., R. 55 E., M. D. B. & M.

001-928



NOTE :
OCS = ORCHARD COVE SUBDIVISION (PHASE I)

ELKO COUNTY, NEVADA
FOR ASSESSMENT USE ONLY

This map does NOT represent a survey. It is compiled from official records, including surveys and deeds. Recorded documents should be used for detailed legal information. Unless approved by Elko County Assessor, other uses are forbidden.

Revised 09/2003 mac