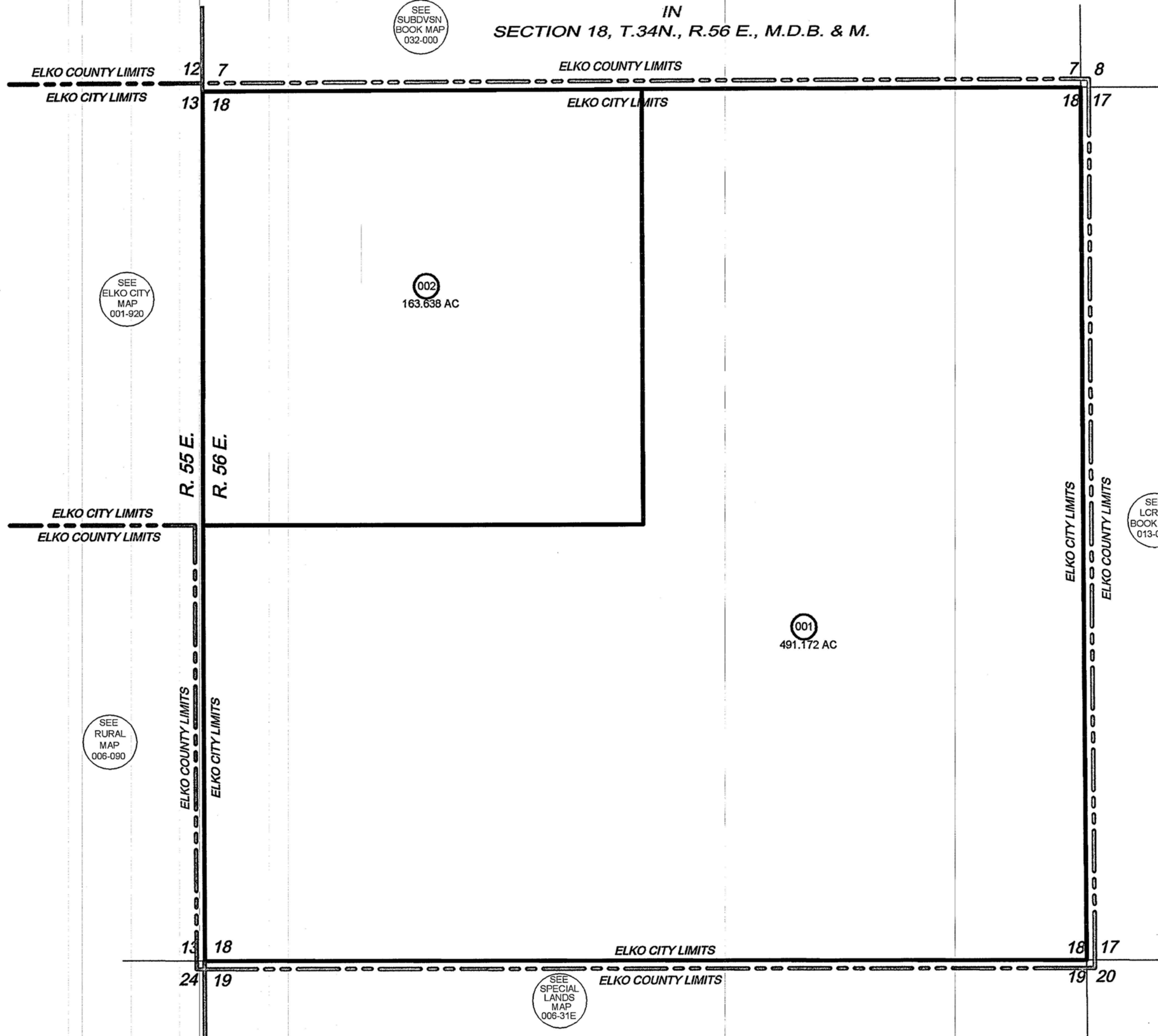


CITY OF ELKO

IN
SECTION 18, T.34N., R.56 E., M.D.B. & M.

001-927



SCALE: 1" = 600'

ELKO COUNTY, NEVADA
FOR ASSESSMENT USE ONLY

This map does NOT represent a survey. It is compiled from official records, including surveys and deeds. Recorded documents should be used for detailed legal information. Unless approved by Elko County Assessor, other uses are forbidden.

Revised 10/2002 mac
map2000i