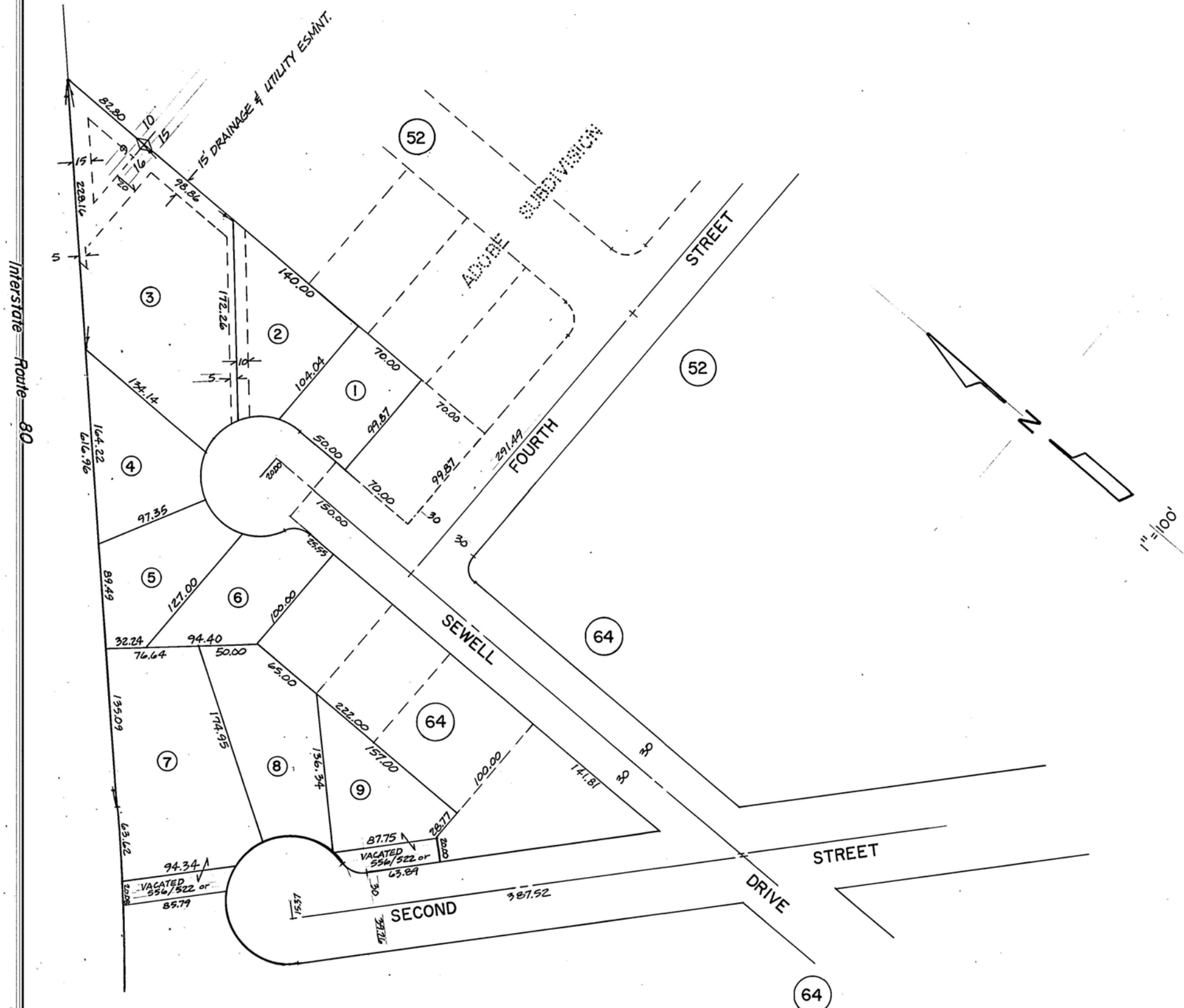


HILLSIDE SUBDIVISION
BLOCK "A"



NOTE:
1. Lot numbers are identical with parcel numbers, unless otherwise shown.

FOR ASSESSMENT USE ONLY. DOES NOT REPRESENT A SURVEY, NO LIABILITY FOR ACCURACY IS ASSURED. OTHER USES FORBIDDEN, UNLESS APPROVED BY COUNTY ASSESSOR.

Port. of SE 1/4 Sec. 9
& Port. of NE 1/4 Sec. 16; Twp. 34 N.; Rg. 55 E.

Elko

REF. NOTE: See Official Sub. Map with File No 228247