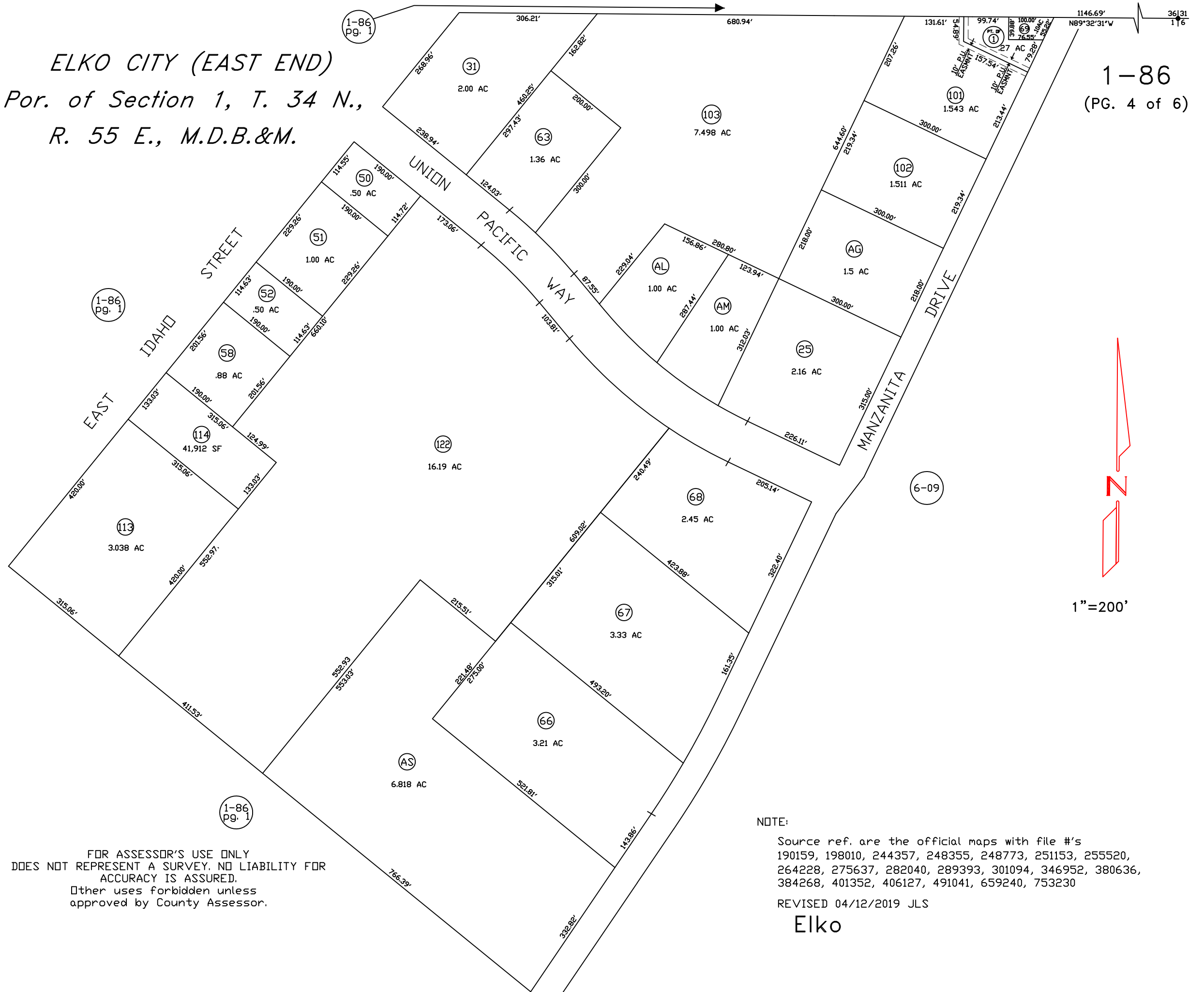


*ELKO CITY (EAST END)  
 Por. of Section 1, T. 34 N.,  
 R. 55 E., M.D.B.&M.*



FOR ASSESSOR'S USE ONLY  
 DOES NOT REPRESENT A SURVEY. NO LIABILITY FOR  
 ACCURACY IS ASSURED.  
 Other uses forbidden unless  
 approved by County Assessor.

NOTE:  
 Source ref. are the official maps with file #'s  
 190159, 198010, 244357, 248355, 248773, 251153, 255520,  
 264228, 275637, 282040, 289393, 301094, 346952, 380636,  
 384268, 401352, 406127, 491041, 659240, 753230  
 REVISED 04/12/2019 JLS

Elko