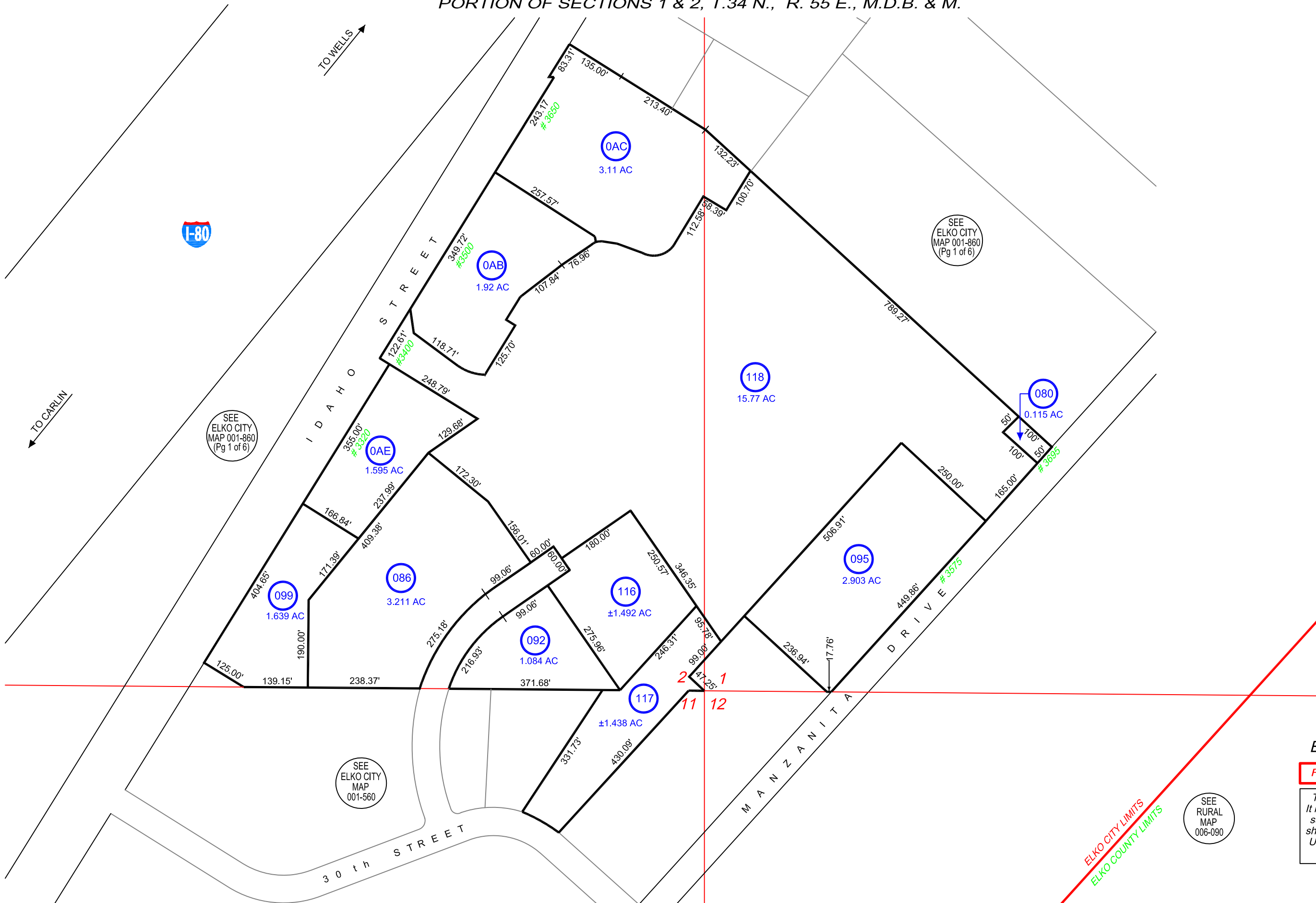


# CITY OF ELKO

IN

PORTION OF SECTIONS 1 & 2, T.34 N., R. 55 E., M.D.B. & M.

001-860  
(Pg 2 of 6)



1" = 200'

Ref. Docs.  
Parcel Map 543932, 687307,  
693006  
BLA Map 597207, 637804  
Vaction 540203, 692714

ELKO COUNTY, NEVADA

**FOR ASSESSMENT USE ONLY**

*This map does NOT represent a survey. It is compiled from official records, including surveys and deeds. Recorded documents should be used for detailed legal information. Unless approved by Elko County Assessor, other uses are forbidden.*

Revised 12/08/2014 JLS