

CITY OF ELKO

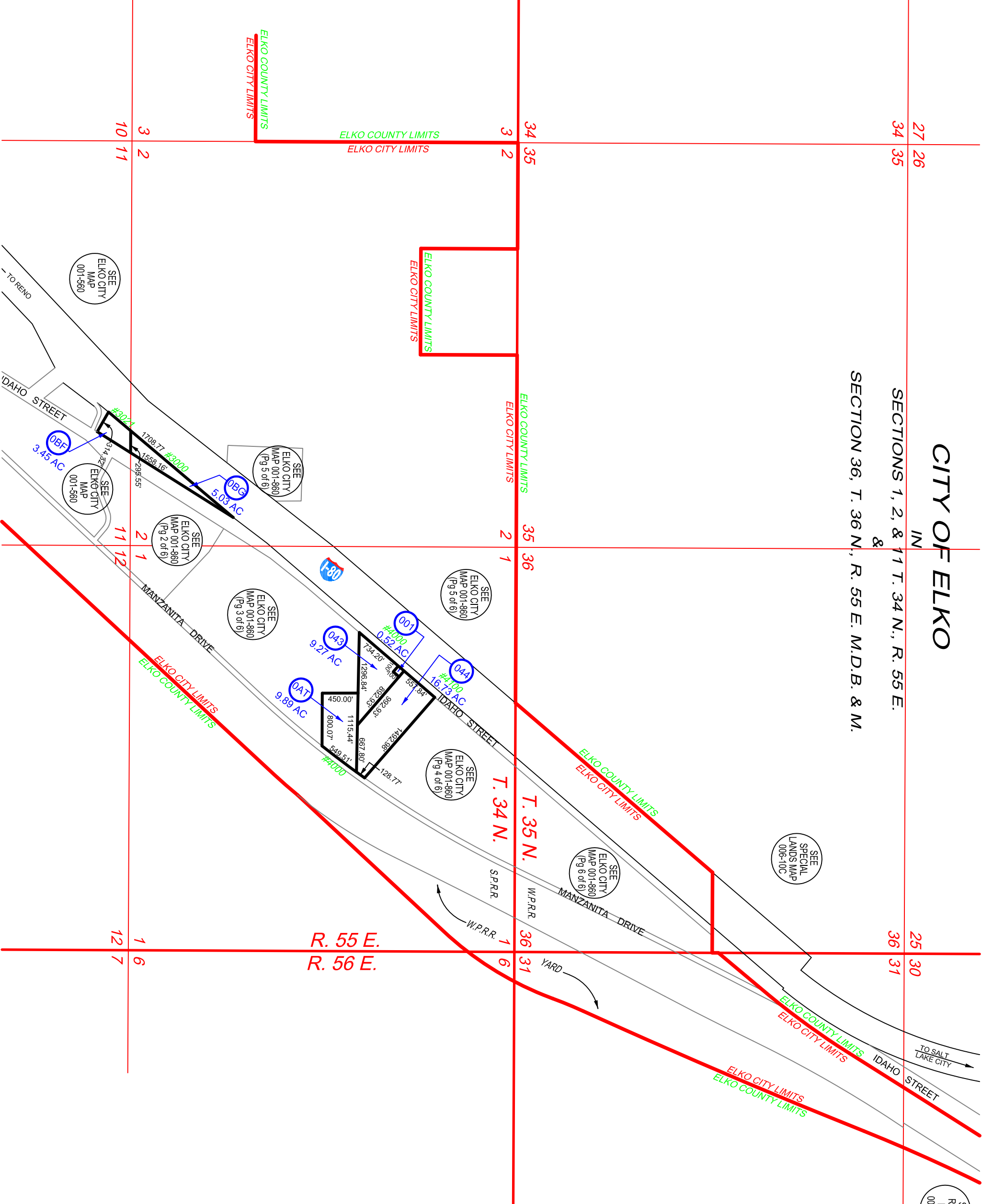
IN

SECTIONS 1, 2, & 11 T. 34 N., R. 55 E.

SECTION 36, T. 36 N., R. 55 E. M.D.B. & M.

001-860

(Pg. 1 of 6)



SCALE: 1" = 1200'

ELKO COUNTY, NEVADA

FOR ASSESSMENT USE ONLY

This map does NOT represent a survey. It is compiled from official records, including surveys and deeds. Recorded documents should be used for detailed legal information. Unless approved by Elko County Assessor, other uses are forbidden.

Revised 10/14/2021 JLS