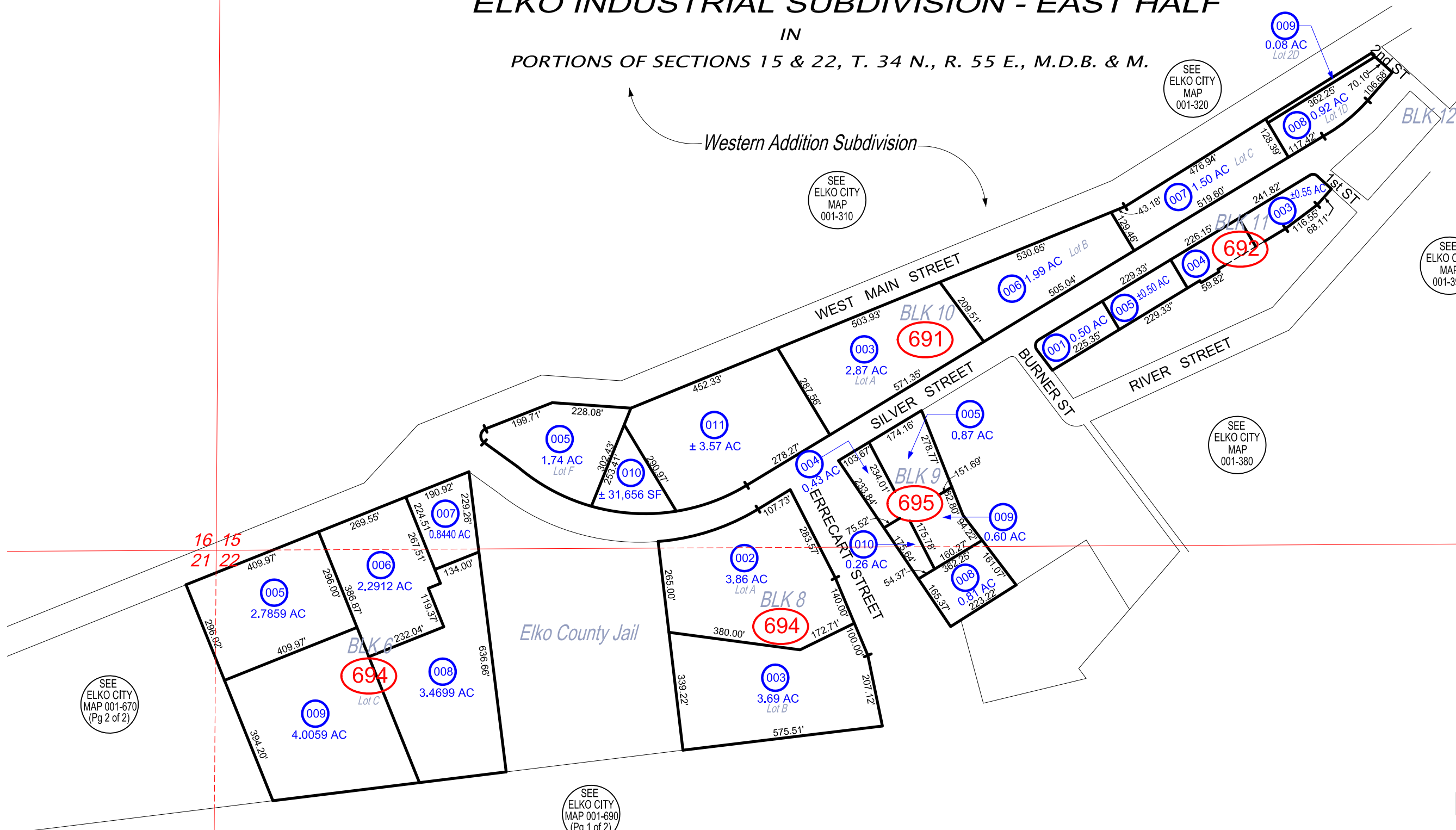


CITY OF ELKO ELKO INDUSTRIAL SUBDIVISION - EAST HALF IN

PORTIONS OF SECTIONS 15 & 22, T. 34 N., R. 55 E., M.D.B. & M.

001-690
(Pg 2 of 2)



SCALE: 1" = 300'

GENERAL NOTE :
 PARCEL NUMBERS ARE FOUND AS FOLLOWS :
 EXAMPLE APN : 001-692-002
 001-690 ← PAGE #
 ← USE THESE
 692 ← BLOCK #
 002 ← PARCEL #

DRAWING NOTES :
 1. SUBDIVISION FORMERLY KNOWN AS W.P.R.R.
 2. SEE FILE #276232, 582778.

ELKO COUNTY, NEVADA

FOR ASSESSMENT USE ONLY

This map does NOT represent a survey. It is compiled from official records, including surveys and deeds. Recorded documents should be used for detailed legal information. Unless approved by Elko County Assessor, other uses are forbidden.

Revised 4/19/2014 JLS

SEE ELKO CITY MAP 001-670 (Pg 2 of 2)

SEE ELKO CITY MAP 001-690 (Pg 1 of 2)

SEE ELKO CITY MAP 001-310

SEE ELKO CITY MAP 001-320

SEE ELKO CITY MAP 001-390

SEE ELKO CITY MAP 001-380