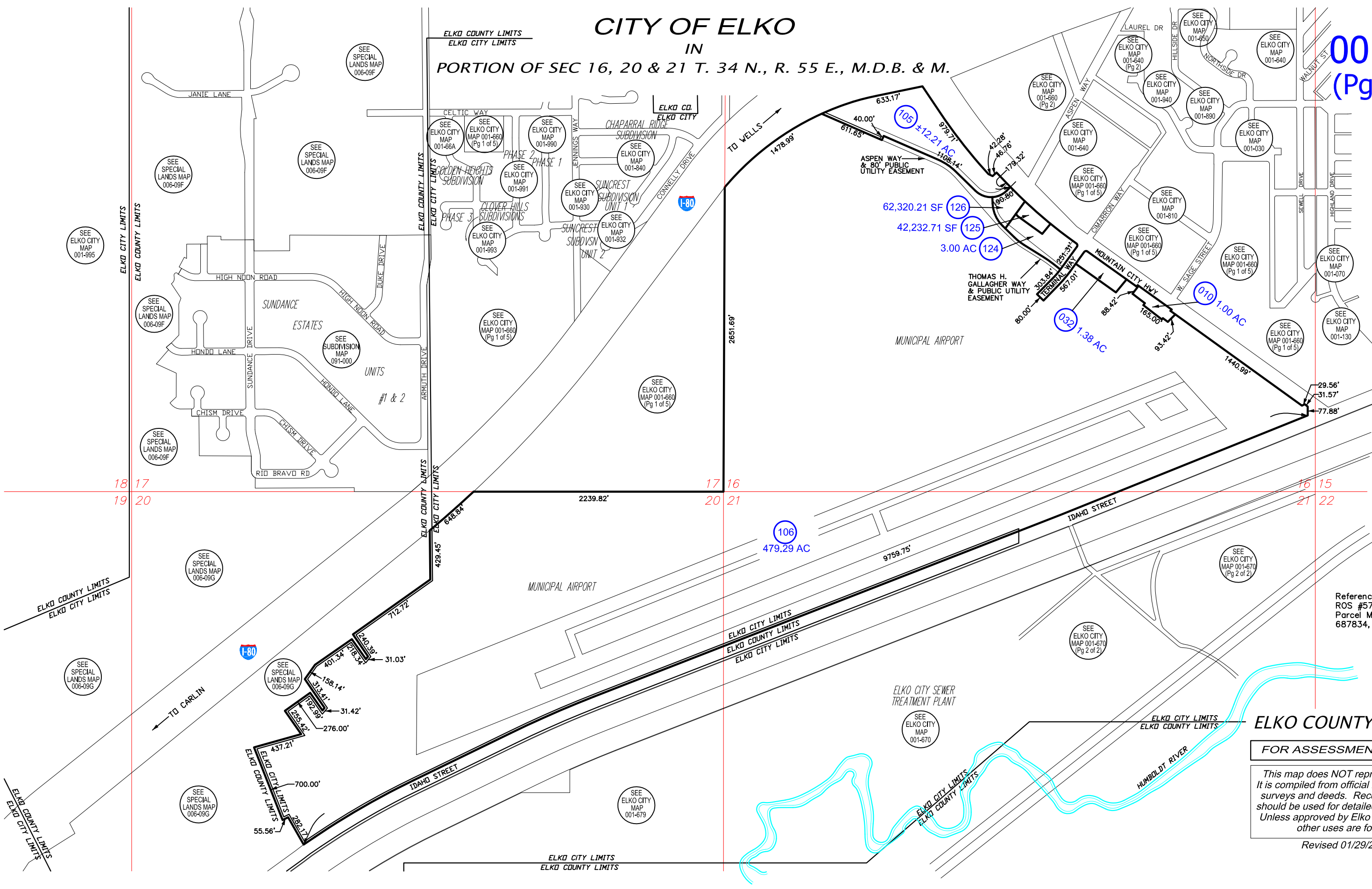


# CITY OF ELKO

IN

PORTION OF SEC 16, 20 & 21 T. 34 N., R. 55 E., M.D.B. & M.

001-660  
(Pg 5 of 5)



Reference Documents:  
ROS #574253  
Parcel Map #609819, 679861,  
687834, 733329, 736506

**ELKO COUNTY, NEVADA**  
FOR ASSESSMENT USE ONLY

This map does NOT represent a survey. It is compiled from official records, including surveys and deeds. Recorded documents should be used for detailed legal information. Unless approved by Elko County Assessor, other uses are forbidden.

Revised 01/29/2018 JLS