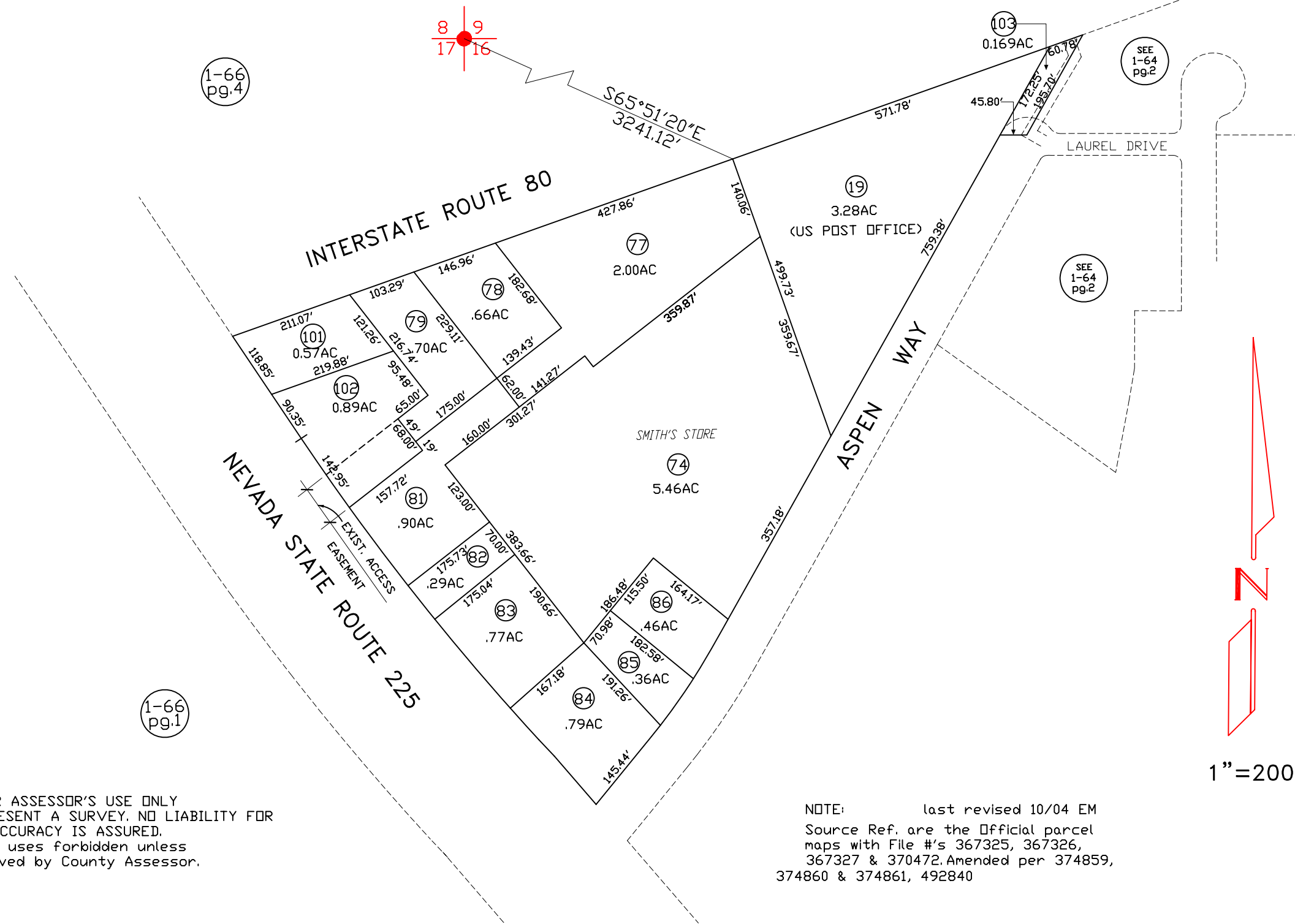


ELKO CITY
 POR OF SEC. 16, TWP.34 N., RNG.55 E.



FOR ASSESSOR'S USE ONLY
 DOES NOT REPRESENT A SURVEY. NO LIABILITY FOR
 ACCURACY IS ASSURED.
 Other uses forbidden unless
 approved by County Assessor.

NOTE: last revised 10/04 EM
 Source Ref. are the Official parcel
 maps with File #'s 367325, 367326,
 367327 & 370472. Amended per 374859,
 374860 & 374861, 492840

1"=200'