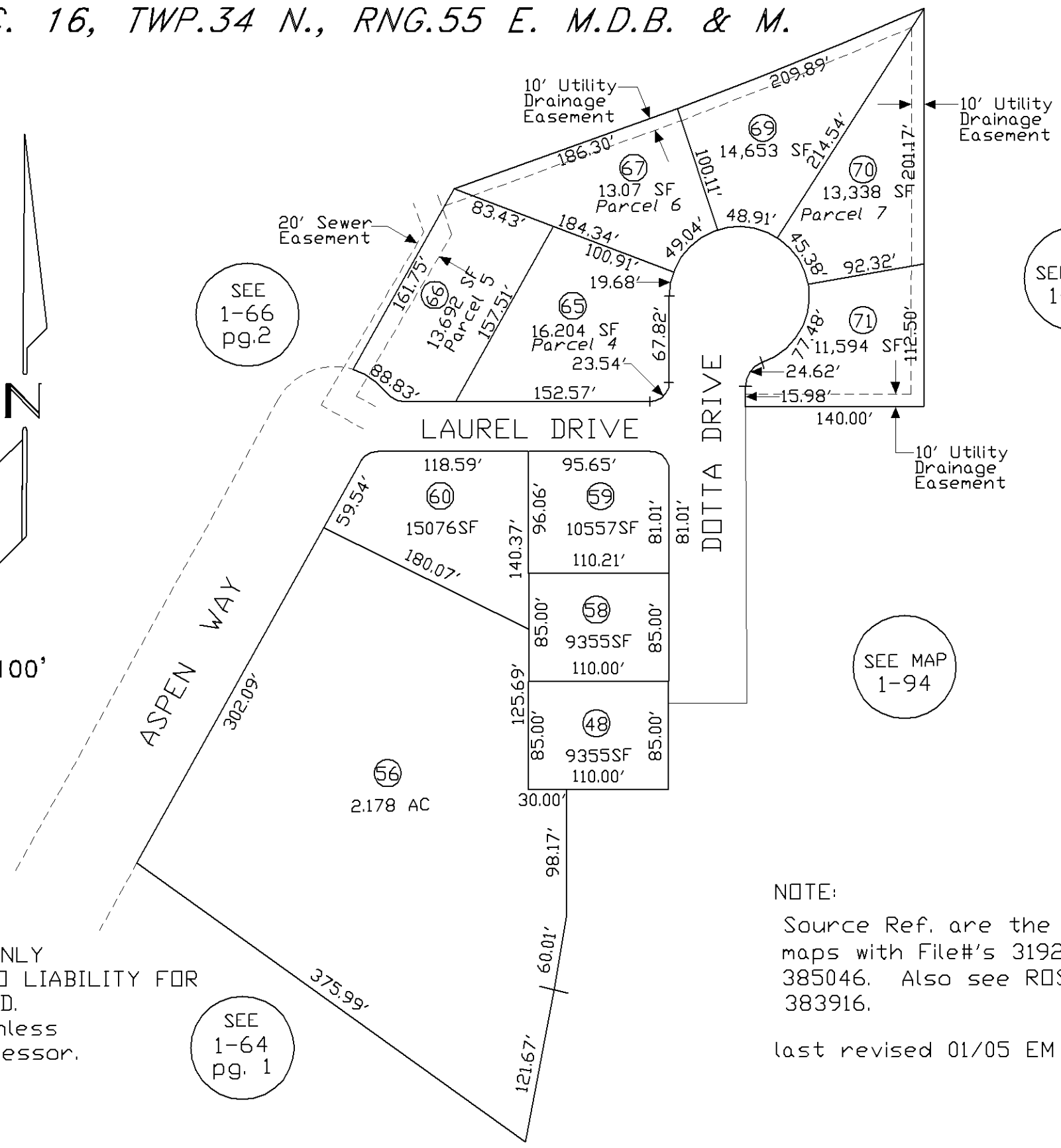
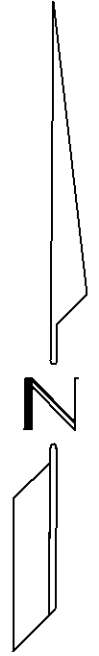


ELKO CITY
 POR OF SEC. 16, TWP.34 N., RNG.55 E. M.D.B. & M.

1"=100'



SEE
 1-66
 pg.2

SEE MAP
 1-65

SEE MAP
 1-94

SEE
 1-64
 pg. 1

FOR ASSESSOR'S USE ONLY
 DOES NOT REPRESENT A SURVEY. NO LIABILITY FOR
 ACCURACY IS ASSURED.
 Other uses forbidden unless
 approved by County Assessor.

NOTE:
 Source Ref. are the Official parcel
 maps with File#'s 319251, 364260, &
 385046. Also see ROS #'s 337231,
 383916.
 last revised 01/05 EM