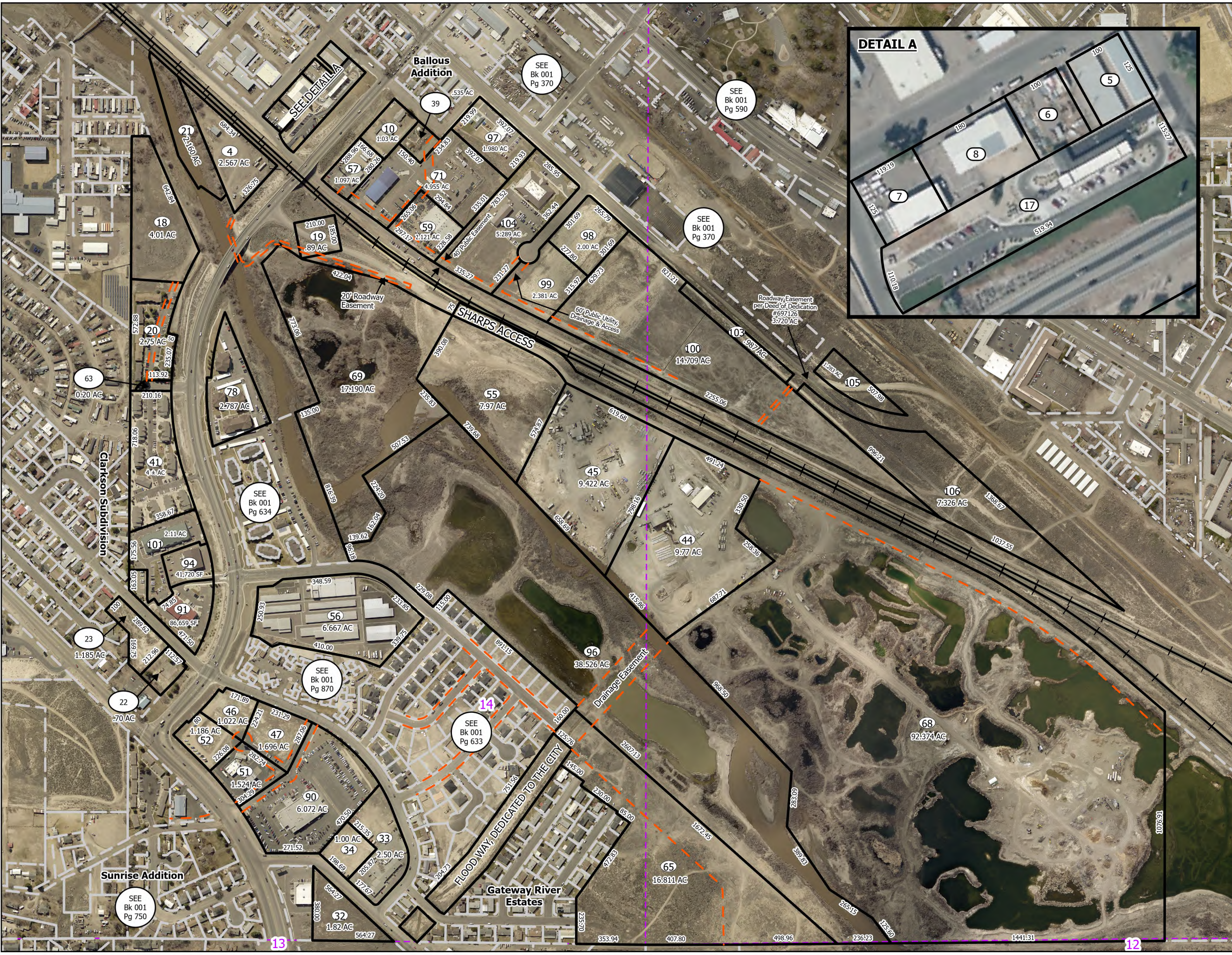
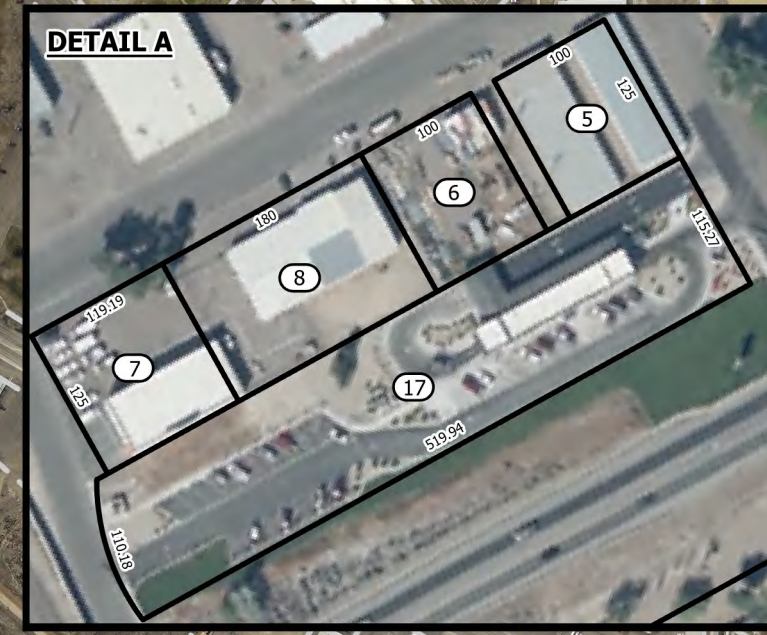
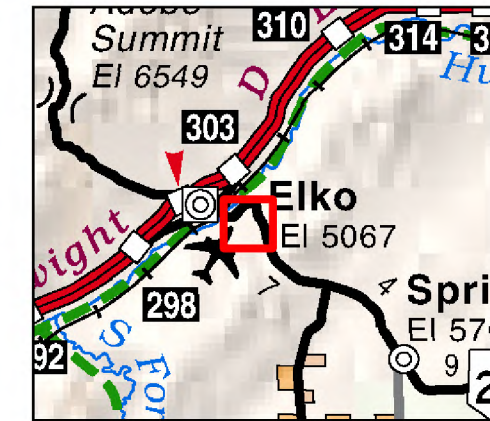
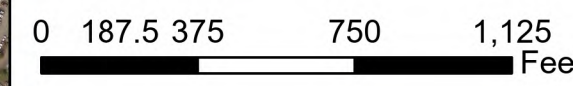


001-630
 CITY OF ELKO
 Sections 11 & 14
 T34N R55E



Legend

- Subject Parcel
- Parcel
- Easement
- Railroad
- Section



Reference Documents:
 Map# 165187, 347195, 383079, 419689,
 437726, 605491, 625691, 626040, 665925,
 672590, 683204, 686741, 694903, 697021,
 711850, 715613, 720249, 733089, 739181,
 754824, 765087, 802064, 828341,
 833179, 836535
 Deed of Ded. # 231393, 697126, 791012

This map does NOT represent a survey.
 It is compiled from official records, including
 surveys and deeds. Recorded documents
 should be used for detailed legal information.
 Unless approved by Elko County Assessor, other
 uses are forbidden.

FOR ASSESSMENT USE ONLY

Background image - 2022 Pictometry
 Flyover

Product of GIS
 Last Update 5/21/2024 APM