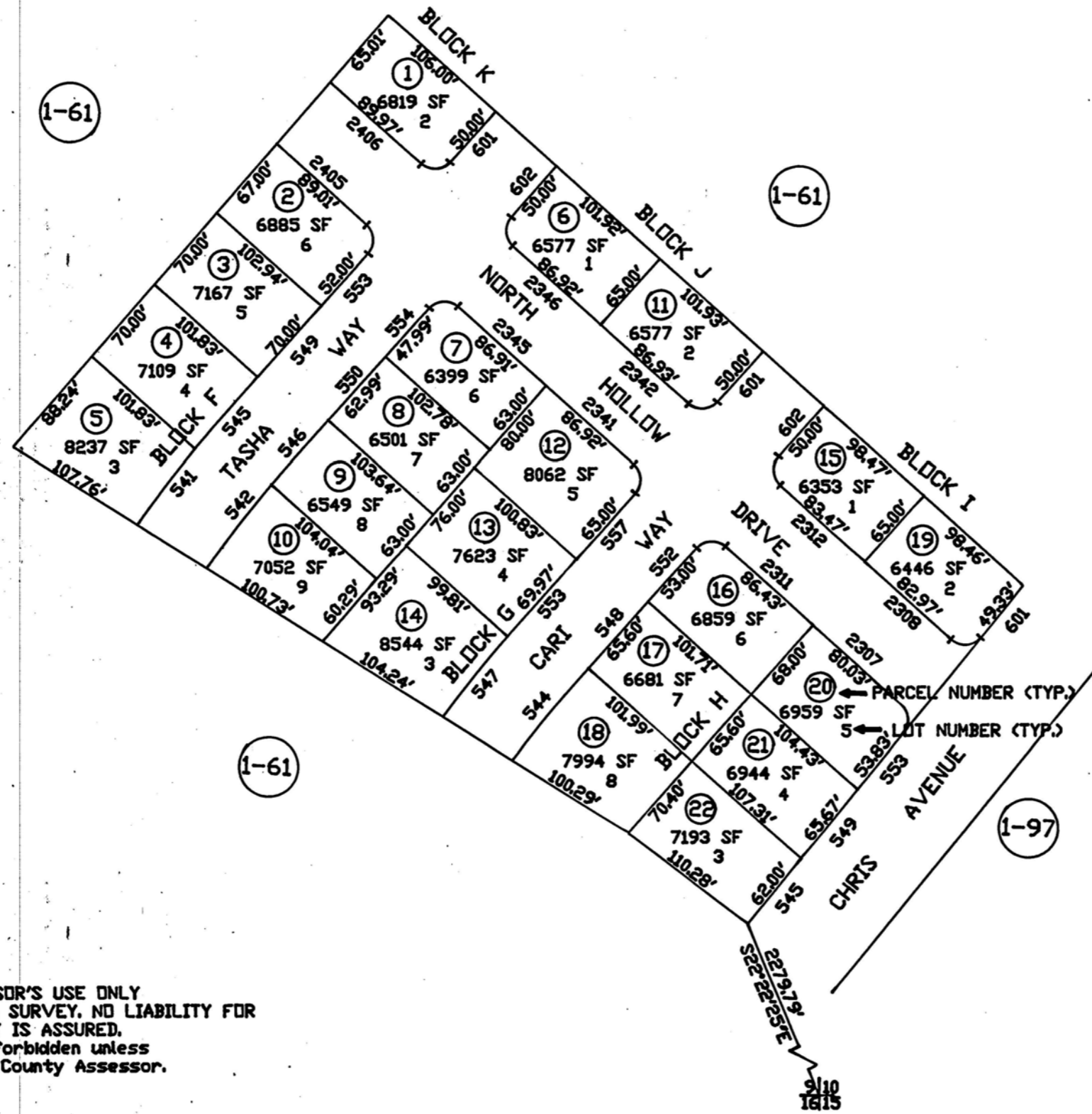


GOLDEN HILLS ESTATES -- UNIT NO. 1

1-61D

Por. of E 1/2 Sec. 9, T. 34 N., R. 55 E., M.D.B.&M.



1-61

1-61

1-61

1-97



1"=100'

FOR ASSESSOR'S USE ONLY  
 DOES NOT REPRESENT A SURVEY. NO LIABILITY FOR  
 ACCURACY IS ASSURED.  
 Other uses forbidden unless  
 approved by County Assessor.

NOTE:

Source ref. is the offic-  
 ial subdiv. plat with File  
 No. 359613.

Elko