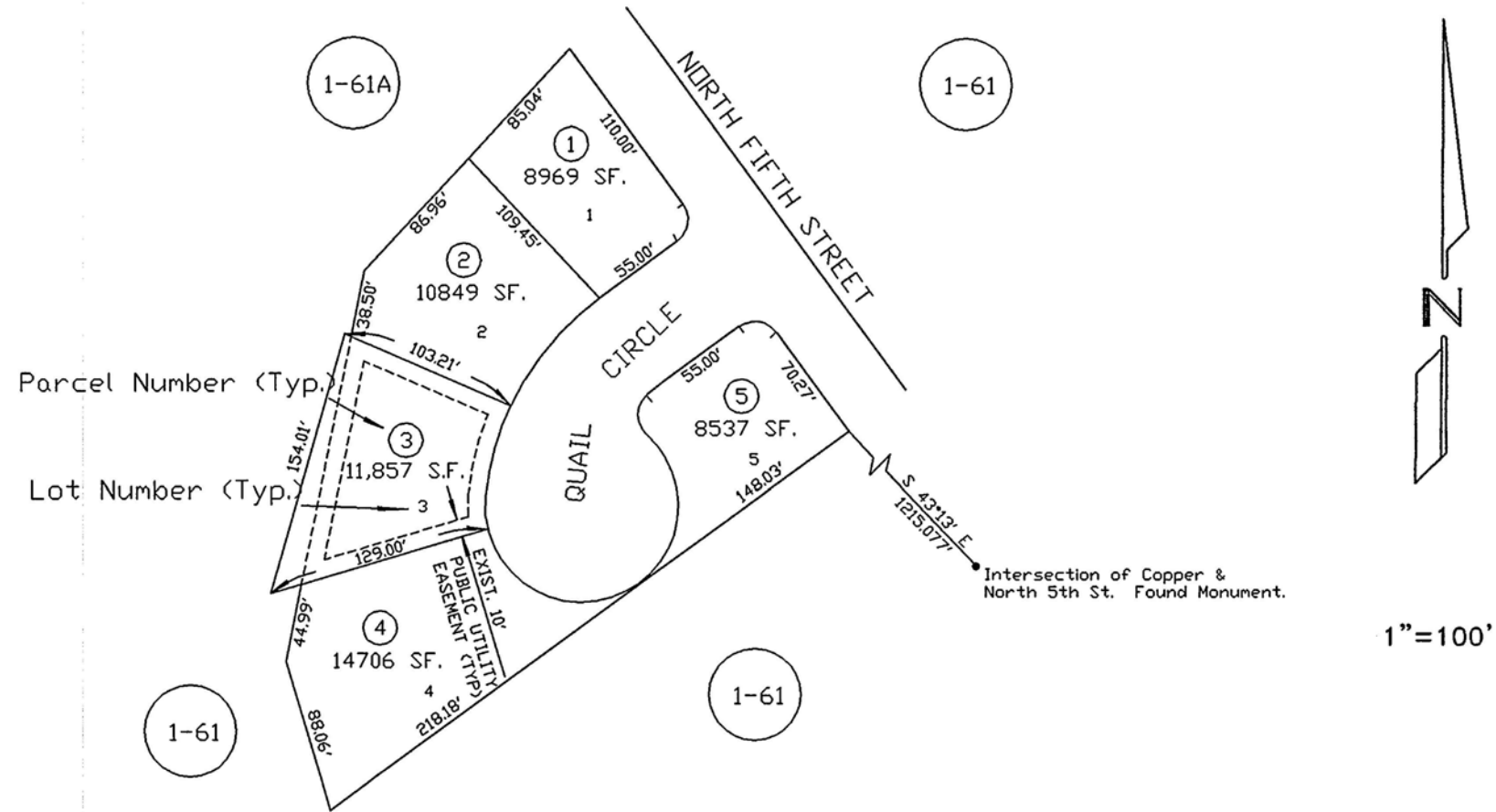


QUAIL POINT SUBDIVISION

1-61C

Loc. in the NW1/4 of Sec. 9, T. 34 N. , R. 55 E., M.D.B.&M.



FOR ASSESSOR'S USE ONLY
 DOES NOT REPRESENT A SURVEY. NO LIABILITY FOR
 ACCURACY IS ASSURED.
 Other uses forbidden unless
 approved by County Assessor.

NOTE:
 Parcel numbers are identical with lot numbers.
 Source ref. is the official subdiv. plat with File No. 347875.

Eiko