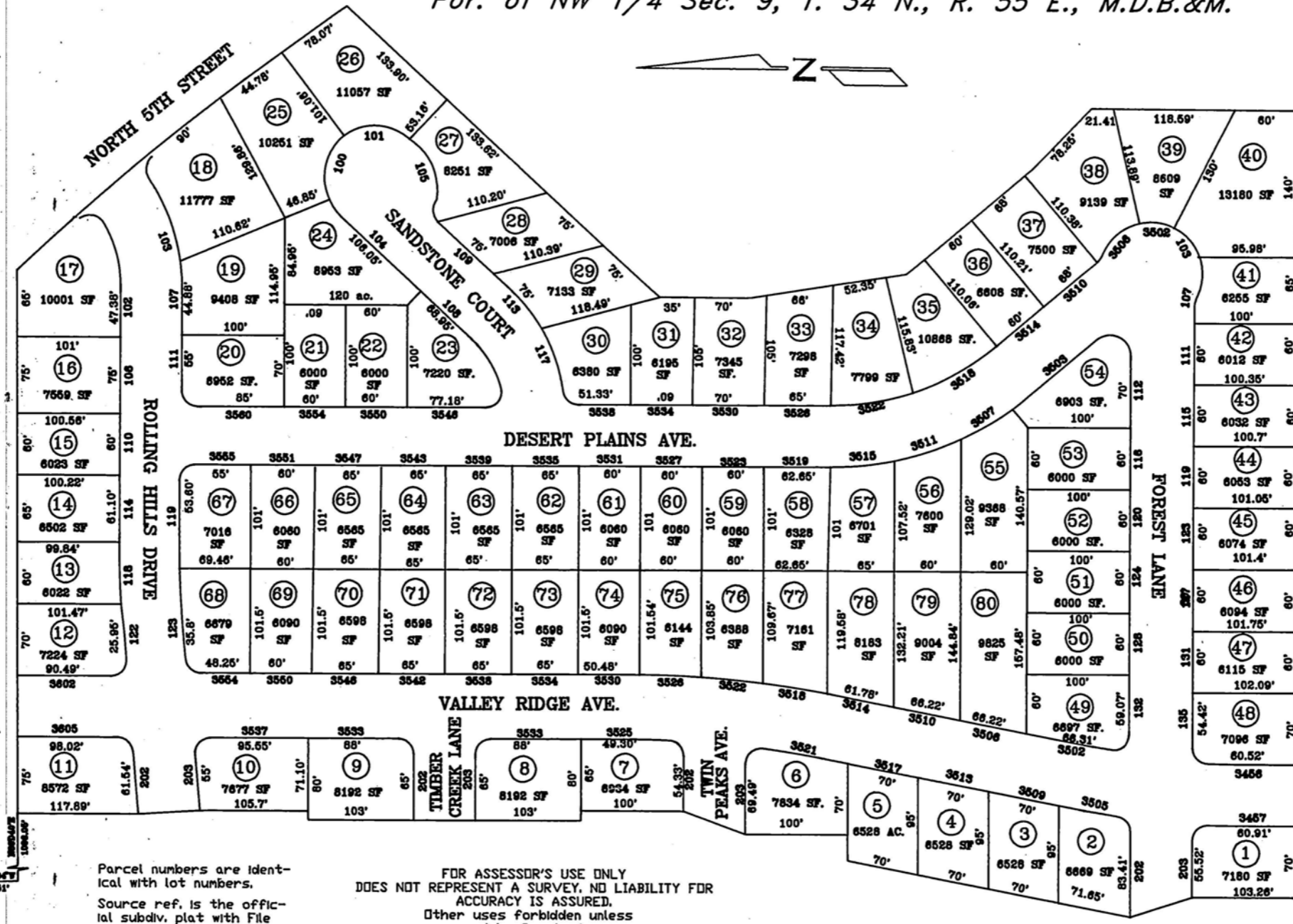


# NORTH FIFTH STREET ESTATES

1-61A

## PHASE 1

Por. of NW 1/4 Sec. 9, T. 34 N., R. 55 E., M.D.B.&M.



4 0  
5 8

Parcel numbers are identical with lot numbers.  
Source ref. is the official subdiv. plat with File No. 288224.

FOR ASSESSOR'S USE ONLY  
DOES NOT REPRESENT A SURVEY. NO LIABILITY FOR ACCURACY IS ASSURED.  
Other uses forbidden unless approved by County Assessor.