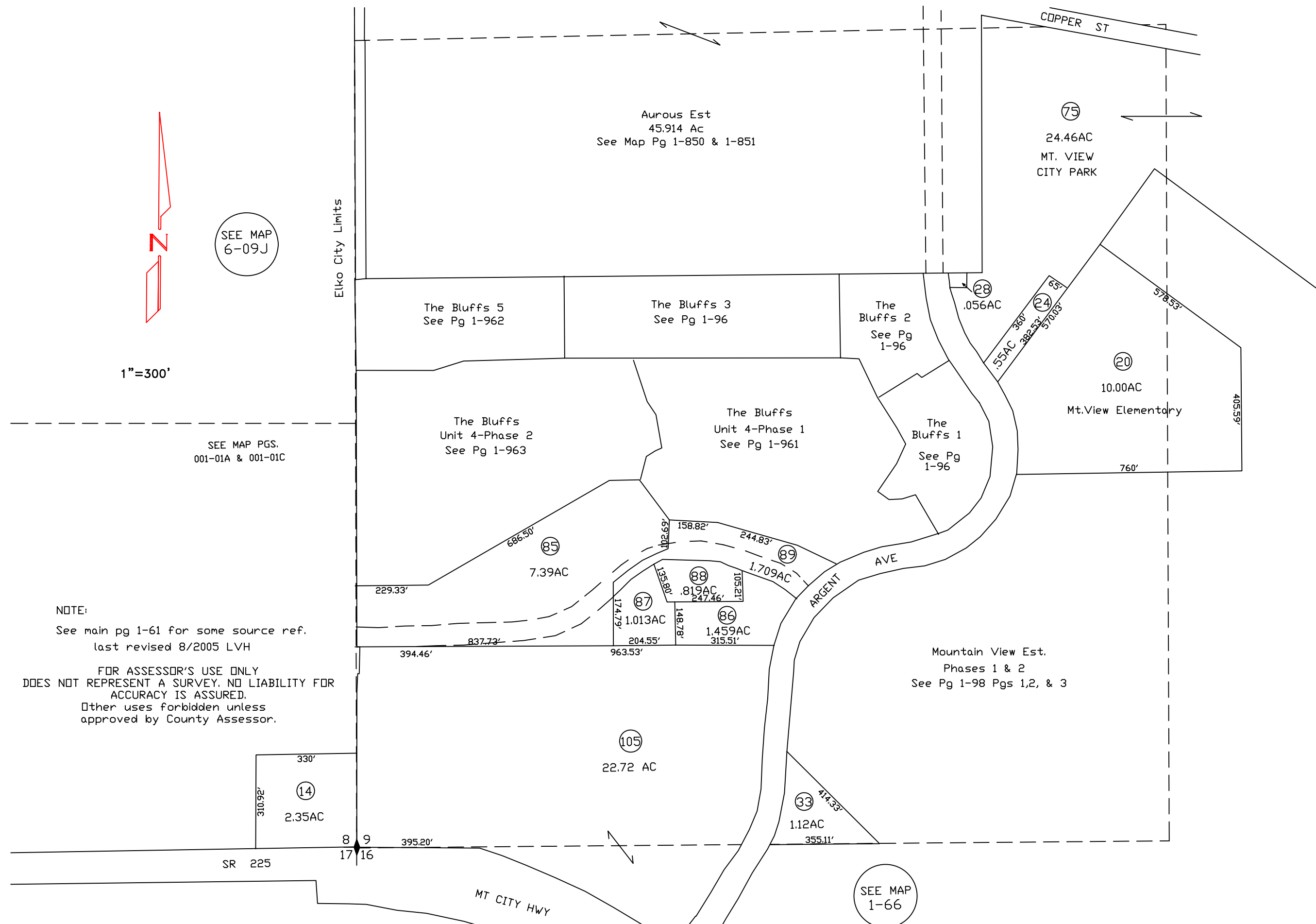


ELKO CITY  
SW 1/4 SEC. 9, TWP.34 N., RNG.55 E.



1"=300'

SEE MAP  
6-09J

NOTE:  
See main pg 1-61 for some source ref.  
last revised 8/2005 LVH

FOR ASSESSOR'S USE ONLY  
DOES NOT REPRESENT A SURVEY. NO LIABILITY FOR  
ACCURACY IS ASSURED.  
Other uses forbidden unless  
approved by County Assessor.

SEE MAP  
1-66