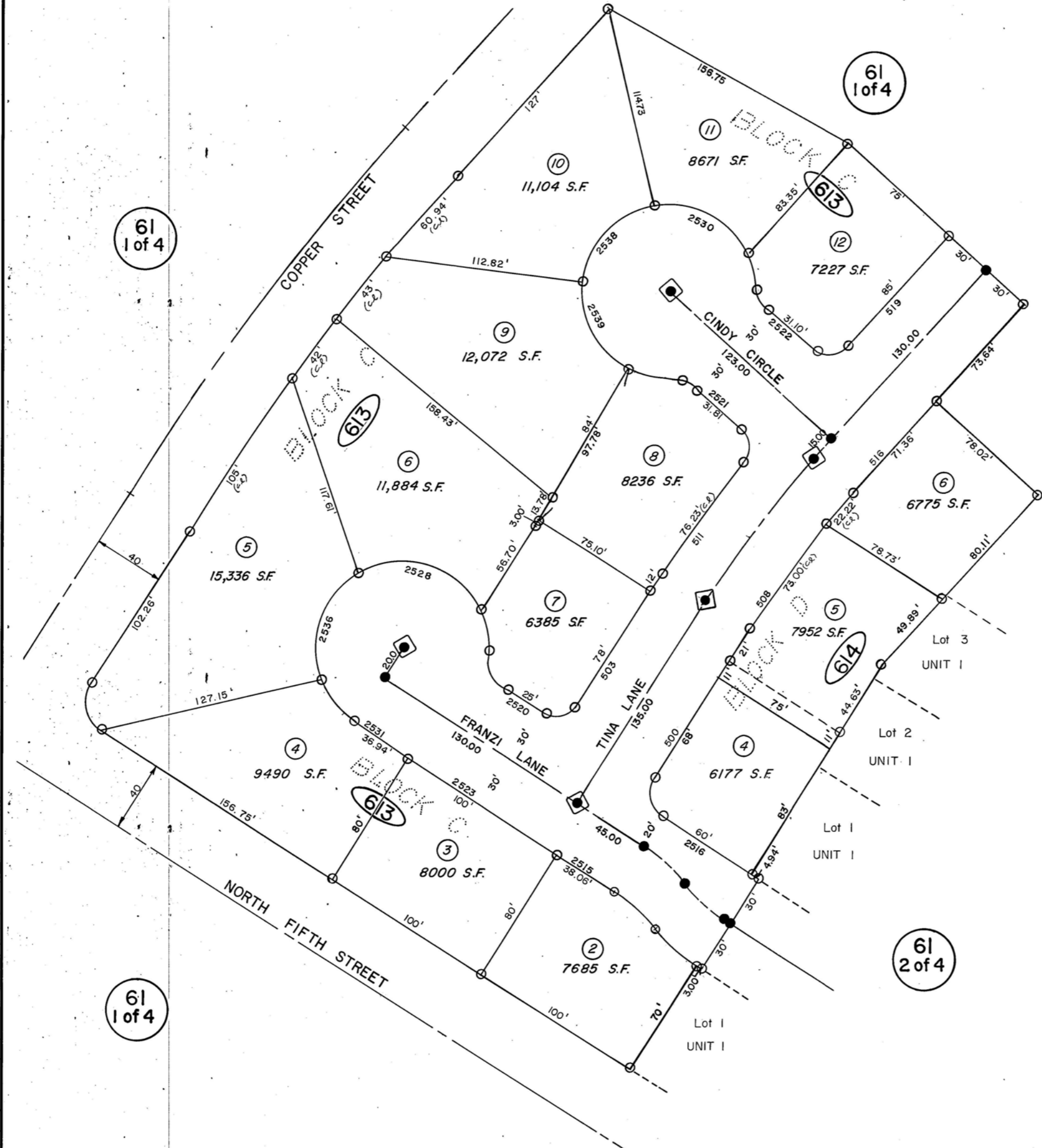


NORTH VII ESTATES, UNIT N^o 2



1" = 60'



LEGEND

- 5/8 Steel Pin Set at all lot corners with R.L.S. # 2161 Tag.
- Survey Point not monumented.
- ◆ Standard City of Elko Survey Monument to be set. Tagged R.L.S. # 2161.

Note: Lot numbers are identical to par. nos. (circled).

FOR ASSESSMENT USE ONLY. DOES NOT REPRESENT A SURVEY. NO LIABILITY FOR ACCURACY IS ASSUMED. OTHER USES FORBIDDEN, UNLESS APPROVED BY ELKO COUNTY ASSESSOR.

NORTH VII ESTATES
UNIT N^o 2
SEC. 9, T. 34 N., R. 55 E.
Elko

61
1 of 4

61
1 of 4

61
1 of 4

61
2 of 4

REF. NOTE: See Official Subdivision Map with File N^o 253634