

NORTH VII ESTATES
Unit No. 1
within E 1/2 Sec. 9, T.34N., R.55E., M.D.B.&M.

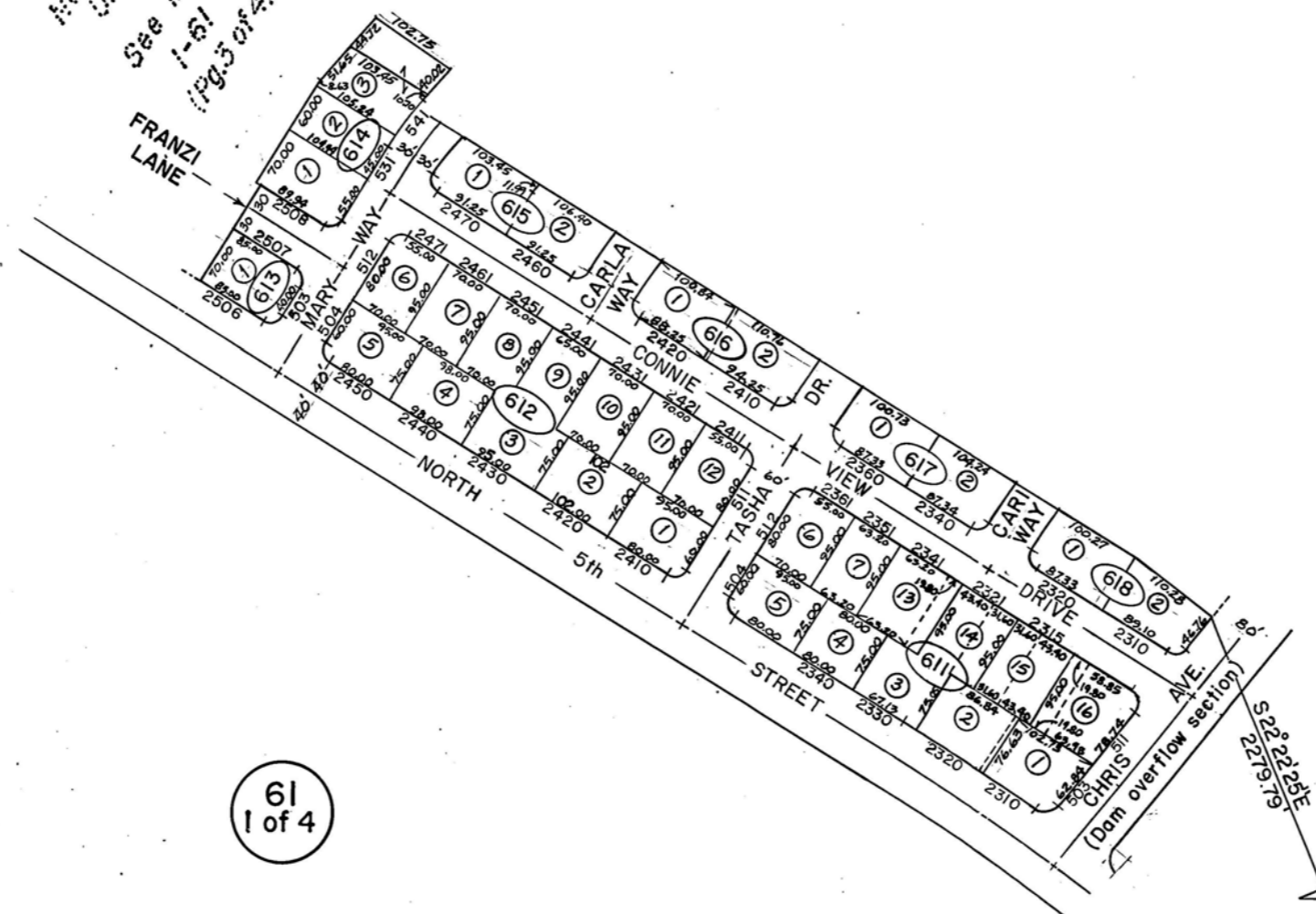


1"=200'

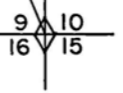
62

North VII Est.
Unit No. 2
See Map Pg.
1-61
(Pg. 3 of 4)

61
1 of 4



61
1 of 4



FOR ASSESSMENT USE ONLY. DOES NOT REPRESENT A SURVEY. NO LIABILITY FOR ACCURACY IS ASSUMED. OTHER USES FORBIDDEN, UNLESS APPROVED BY ELKO COUNTY ASSESSOR.

Elko

TABLE OF AREAS (*=REV'D. FM. ORIG.)						
BLK.	LOT	SQUARE FEET	BLK.	LOT	SQUARE FEET	
611	1	7700.99 *	612	7	6650.00	
	2	6498.95 *		8	6650.00	
	3	6390.90		9	6175.00	
	4	6000.00		10	6650.00	
	5	7076.72		11	6650.00	
	6	6601.71		12	6601.71	
	7	6004.00		613	1	6903.42
612	Pct. No.	13	7885.00 *		1	7297.51
		14	7125.00 *		2	6298.71
		15	7125.00 *		3	6204.58
		16	8458.42 *		1	7312.97
		1	7076.72		2	7417.75
		2	7650.00 *	1	7135.08 *	
613	3	7125.00 *	614	2	7626.93 *	
	4	7350.00		1	7085.74	
	5	7076.72		2	7150.69	
	6	6601.71		1	7077.07	
614	615	616	617	618	2	6853.32

KEY TO ORIGINAL BLOCK LETTER	
ASSESSOR'S BLK. NO.	ORIGINAL BLK. LTR.
611	A
612	B
613	C
614	D
615	E
616	F
617	G
618	H

POSTED BY	DATE
K. Kennison	12-6-84
K.K.	9-25-87
K.K.	7-26-91
K.K.	7-15-93
K.K.	12-28-93

REF. NOTE: See Final Subdivision Map with File No. 191777