

**CITY OF ELKO**  
**RUBY VISTA SUBDIVISION**  
**IN**

**PORTIONS OF SECTIONS 10 & 11, T. 34 N., R. 55 E., M.D.B. & M.**

**001-561**

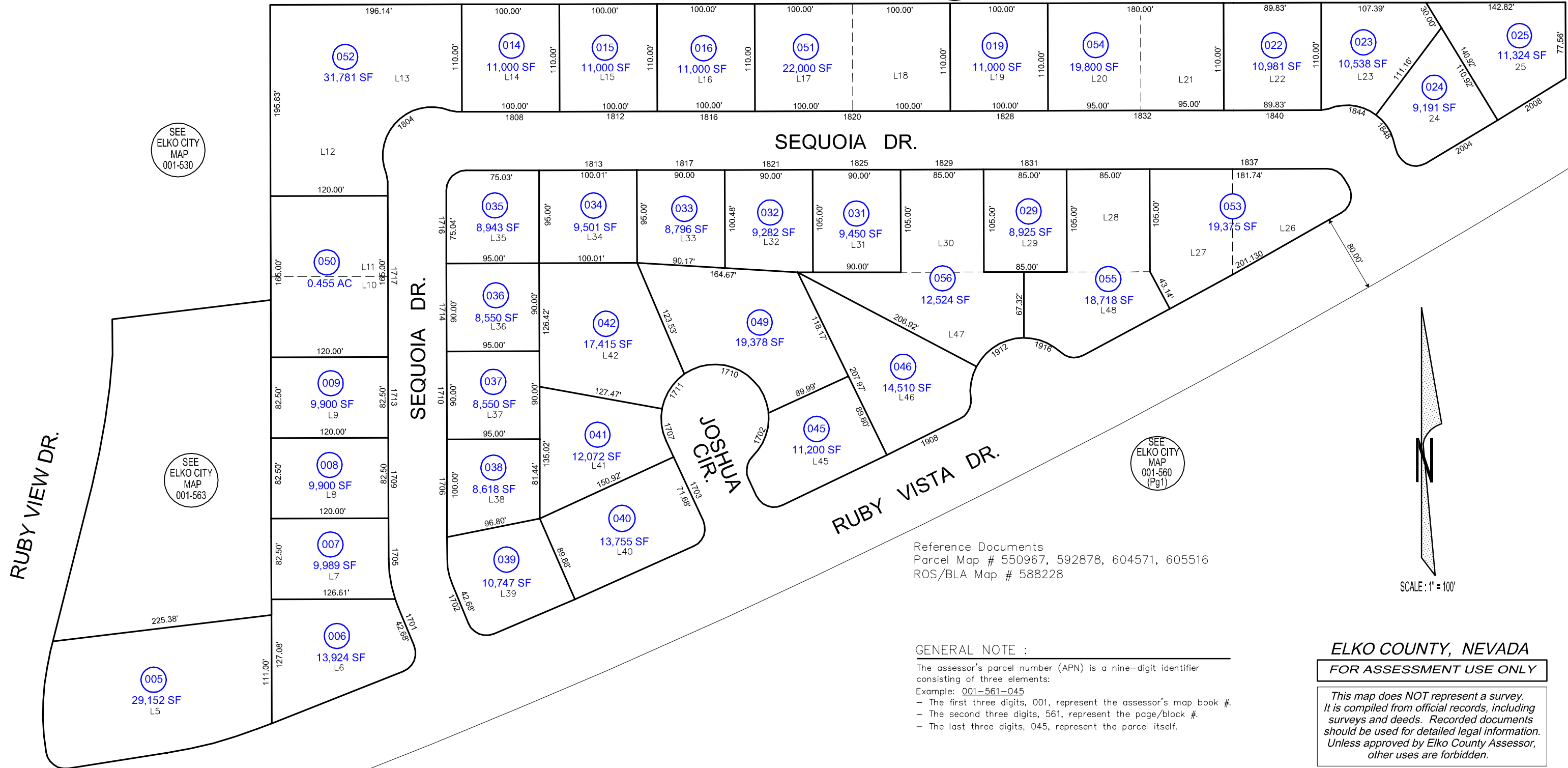
SEE  
ELKO CITY  
MAP  
001-900

SEE  
ELKO CITY  
MAP  
001-530

SEE  
ELKO CITY  
MAP  
001-530

SEE  
ELKO CITY  
MAP  
001-563

SEE  
ELKO CITY  
MAP  
001-560  
(Pg1)



Reference Documents  
Parcel Map # 550967, 592878, 604571, 605516  
ROS/BLA Map # 588228

**GENERAL NOTE :**

The assessor's parcel number (APN) is a nine-digit identifier consisting of three elements:  
Example: 001-561-045  
- The first three digits, 001, represent the assessor's map book #.  
- The second three digits, 561, represent the page/block #.  
- The last three digits, 045, represent the parcel itself.

**ELKO COUNTY, NEVADA**

**FOR ASSESSMENT USE ONLY**

*This map does NOT represent a survey. It is compiled from official records, including surveys and deeds. Recorded documents should be used for detailed legal information. Unless approved by Elko County Assessor, other uses are forbidden.*

Revised 11/2008 JLS