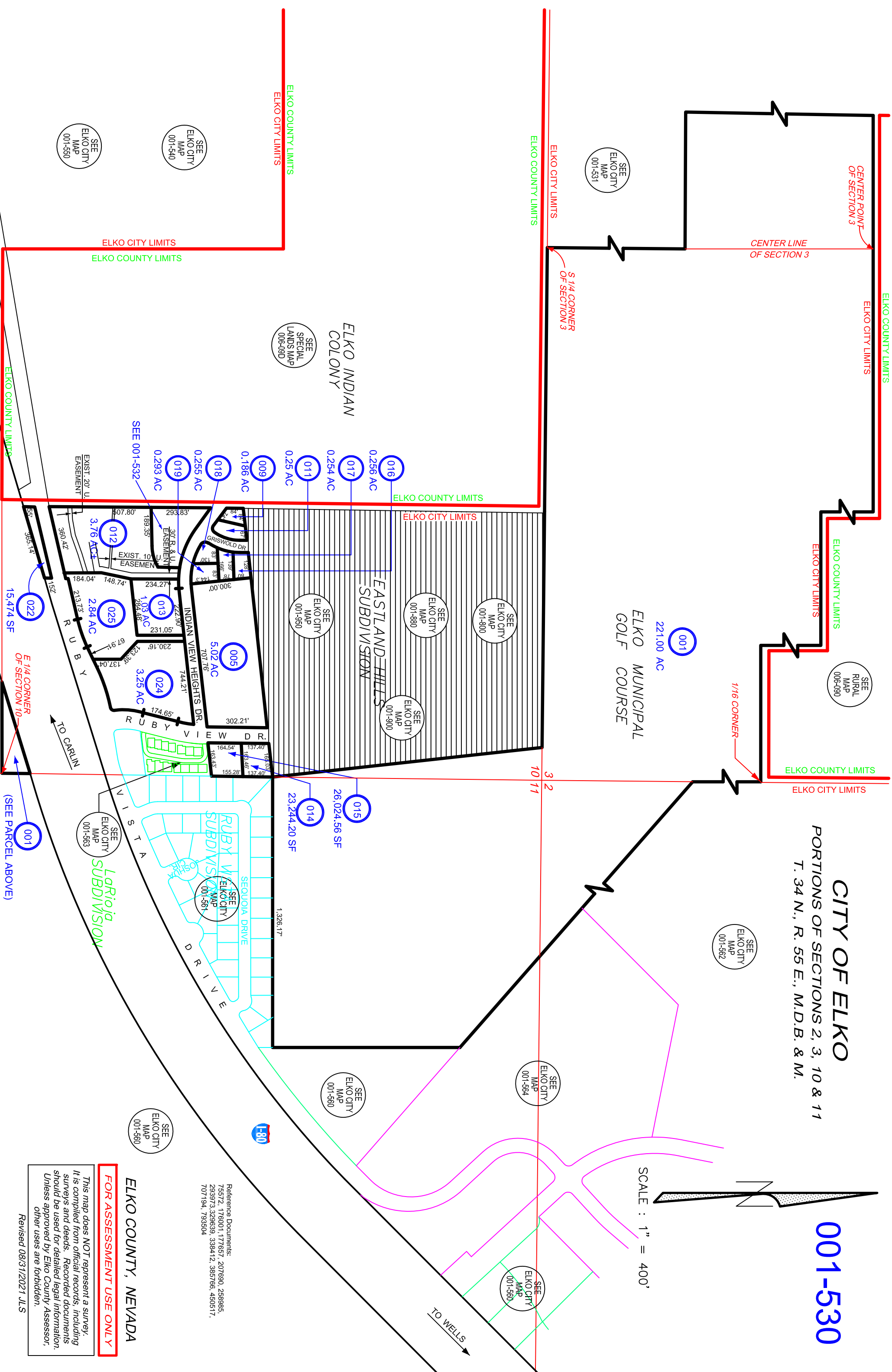


001-530

CITY OF ELKO PORTIONS OF SECTIONS 2, 3, 10 & 11 T. 34 N., R. 55 E., M.D.B. & M.



SCALE : 1" = 400'



FOR ASSESSMENT USE ONLY

This map does NOT represent a survey. It is compiled from official records, including surveys and deeds. Recorded documents should be used for detailed legal information. Unless approved by Elko County Assessor, other uses are forbidden.

Revised 08/31/2021 JLS

Reference Documents:
75572, 176001, 177657, 207690, 258985,
293973, 329639, 338412, 385786, 450517,
707194, 793904

ELKO COUNTY, NEVADA