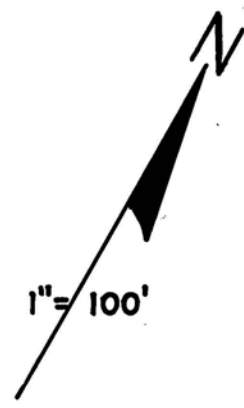
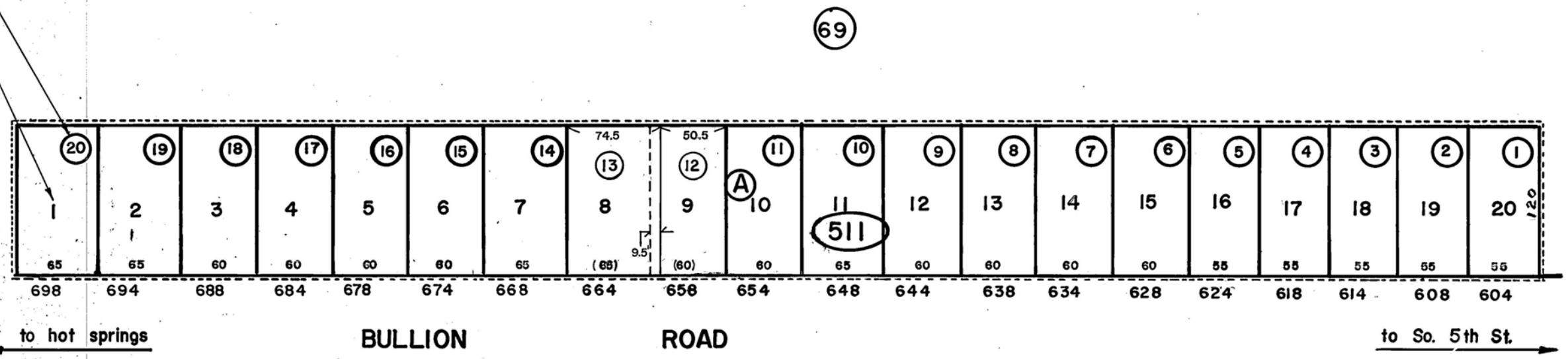


CLEARVIEW ESTATES  
within NW1/4 Sec.22, T.34N., R.55E., M.D.B.&M.



Parcel Number (typ.)  
Lot Number (typ.)



RIVERVIEW  
SUB.

For assessment use only; does not represent a survey, no liability for accuracy is assured. Other uses forbidden unless approved by Elko County Assessor.

REF. NOTE: See Official Plat with File No 69425

Elko, 12/79  
3/78  
11/8/67