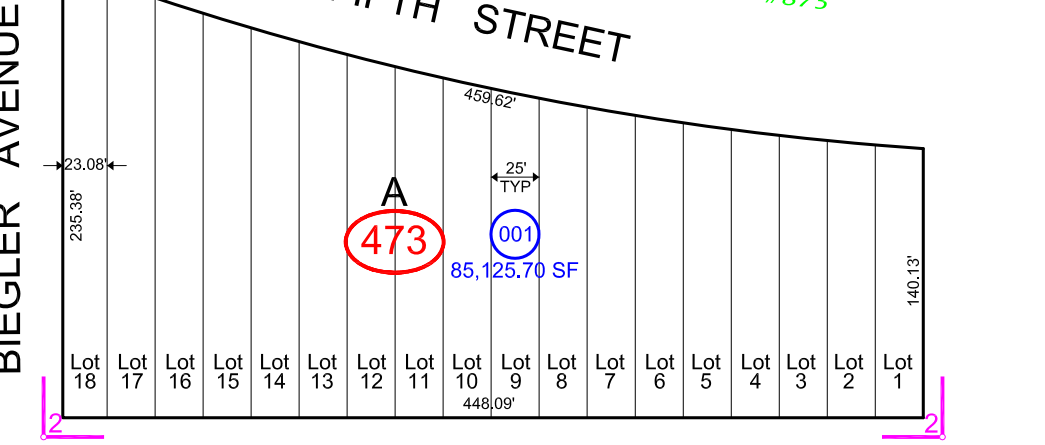
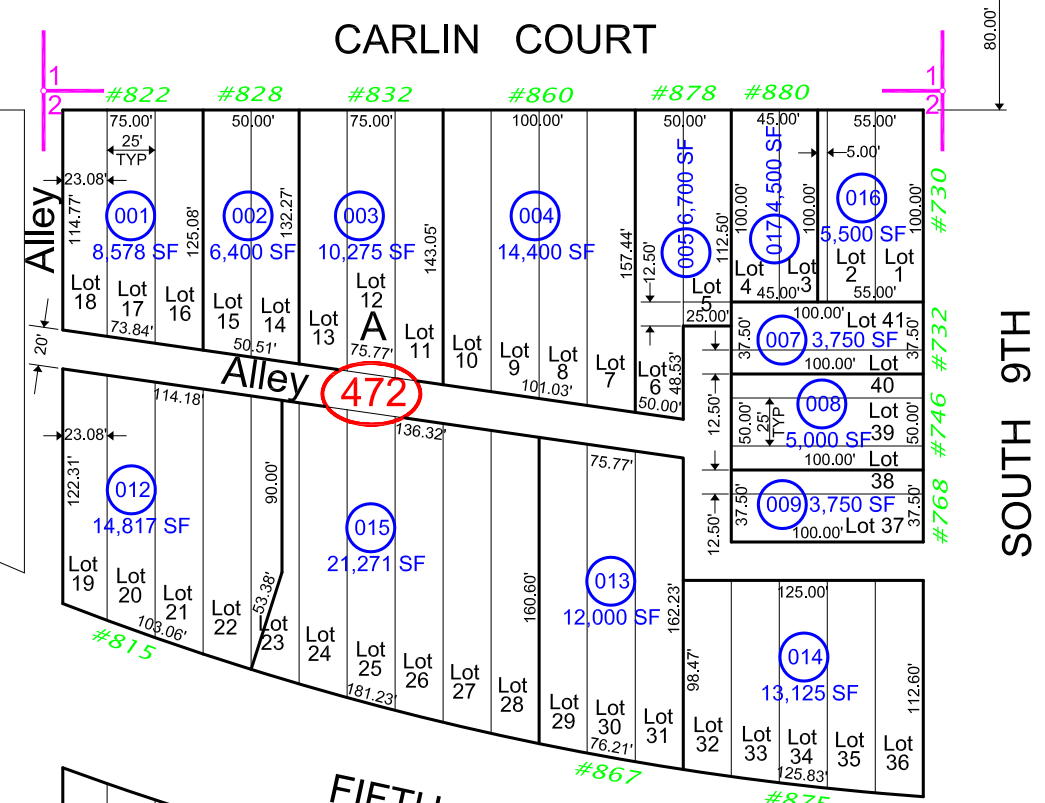
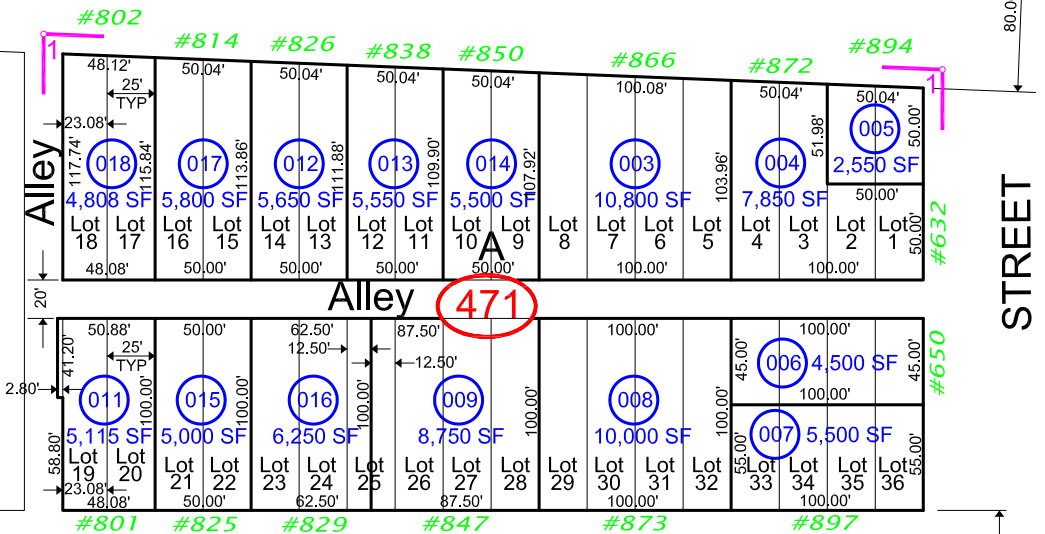


CITY OF ELKO FIRST & SECOND OUDERKIRK ADDITIONS

001-470

IN
SW1/4 SECTION 14, T. 34 N., R. 55 E., M.D.B. & M.

OUDERKIRK AVENUE



PANORAMA DRIVE

SEE ELKO CITY MAP 001-480

CLARKSON DRIVE

SEE ELKO CITY MAP 001-480

SOUTHSIDE DRIVE

SEE ELKO CITY MAP 001-490

LAMOILLE HIGHWAY

ELKO COUNTY, NEVADA

FOR ASSESSMENT USE ONLY

This map does NOT represent a survey. It is compiled from official records, including surveys and deeds. Recorded documents should be used for detailed legal information. Unless approved by Elko County Assessor, other uses are forbidden.

Revised 05/20/2020

NOTE:
1 = FIRST OUDERKIRK ADDITION
2 = SECOND OUDERKIRK ADDITION

GENERAL NOTE :
PARCEL NUMBERS ARE FOUND AS FOLLOWS :
EXAMPLE APN : 001 - 473 - 011

001-470

← PAGE #

← USE THESE

473

← BLOCK #

011

← PARCEL #

SECTION 14
SECTION 23

Reference Maps
48124, 51117, 768404

SCALE : 1" = 100'

