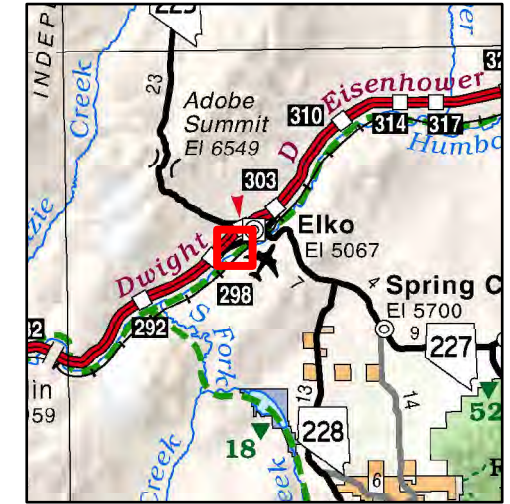
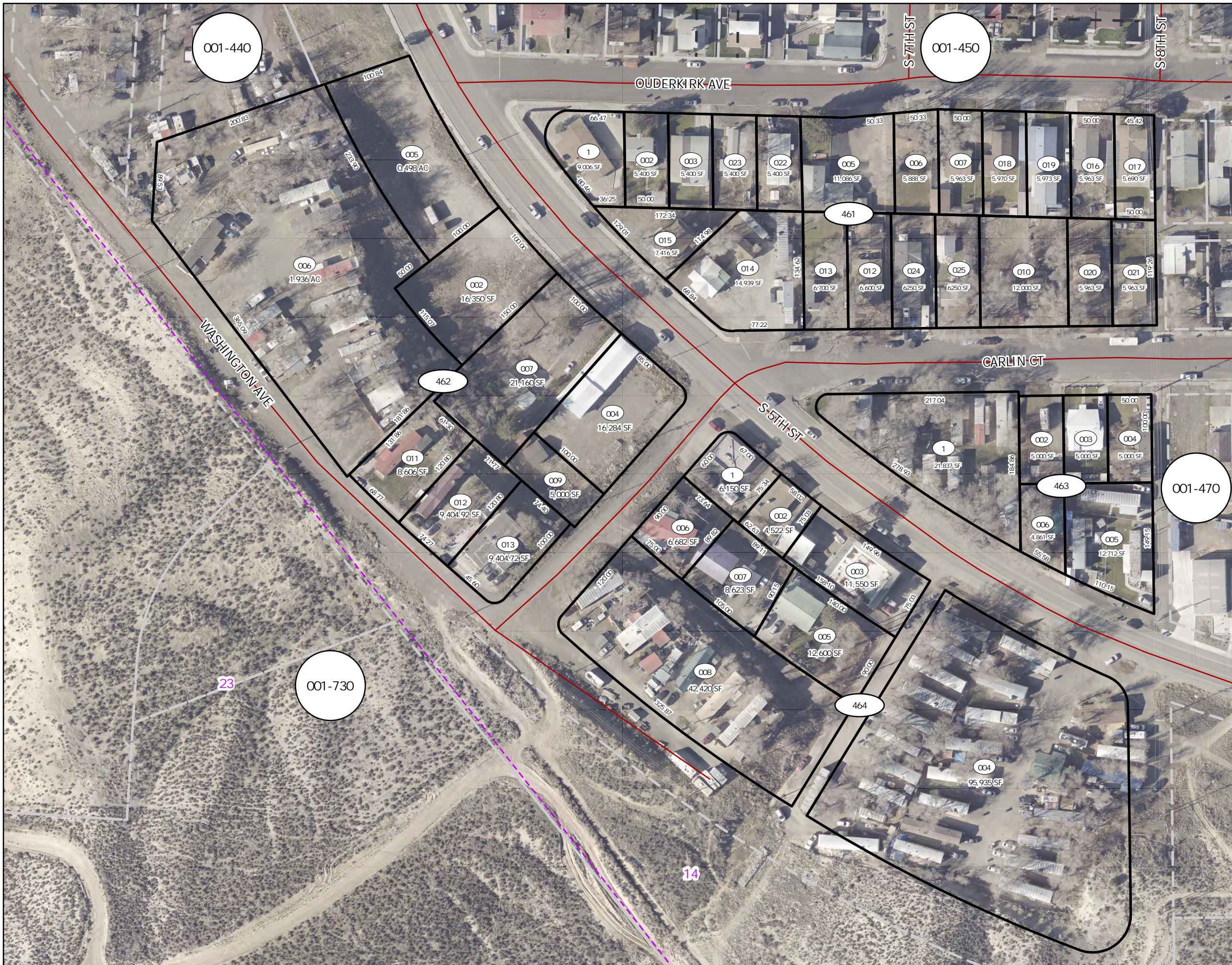


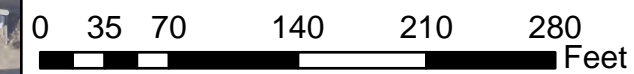
001-460 CITY OF ELKO

T34N, R55E, Section 14, MD.B.&M



Legend

- Subject Parcel
- Parcel
- Lot
- Road
- Section



Reference Documents:
Map # 810914

This map does NOT represent a survey. It is compiled from official records, including surveys and deeds. Recorded documents should be used for detailed legal information. Unless approved by Elko County Assessor, other uses are forbidden.

FOR ASSESSMENT USE ONLY

Background image - 2021 Pictometry flyover

Product of GIS
Last Update 2/6/2023 APM