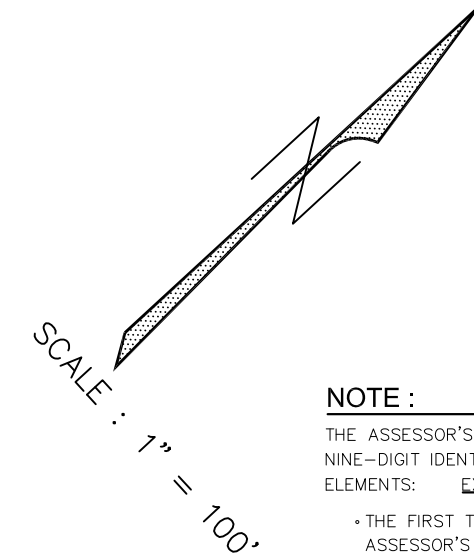


SEE ELKO CITY MAP 001-330



NOTE :

THE ASSESSOR'S PARCEL NUMBER (APN) IS A NINE-DIGIT IDENTIFIER CONSISTING OF THREE ELEMENTS: EXAMPLE: 001-398-013

- THE FIRST THREE DIGITS, REPRESENT THE ASSESSOR'S MAP BOOK# 001
- THE SECOND THREE DIGITS, REPRESENT THE BLOCK# 398
- THE THIRD THREE DIGITS, REPRESENT THE PARCEL# 013

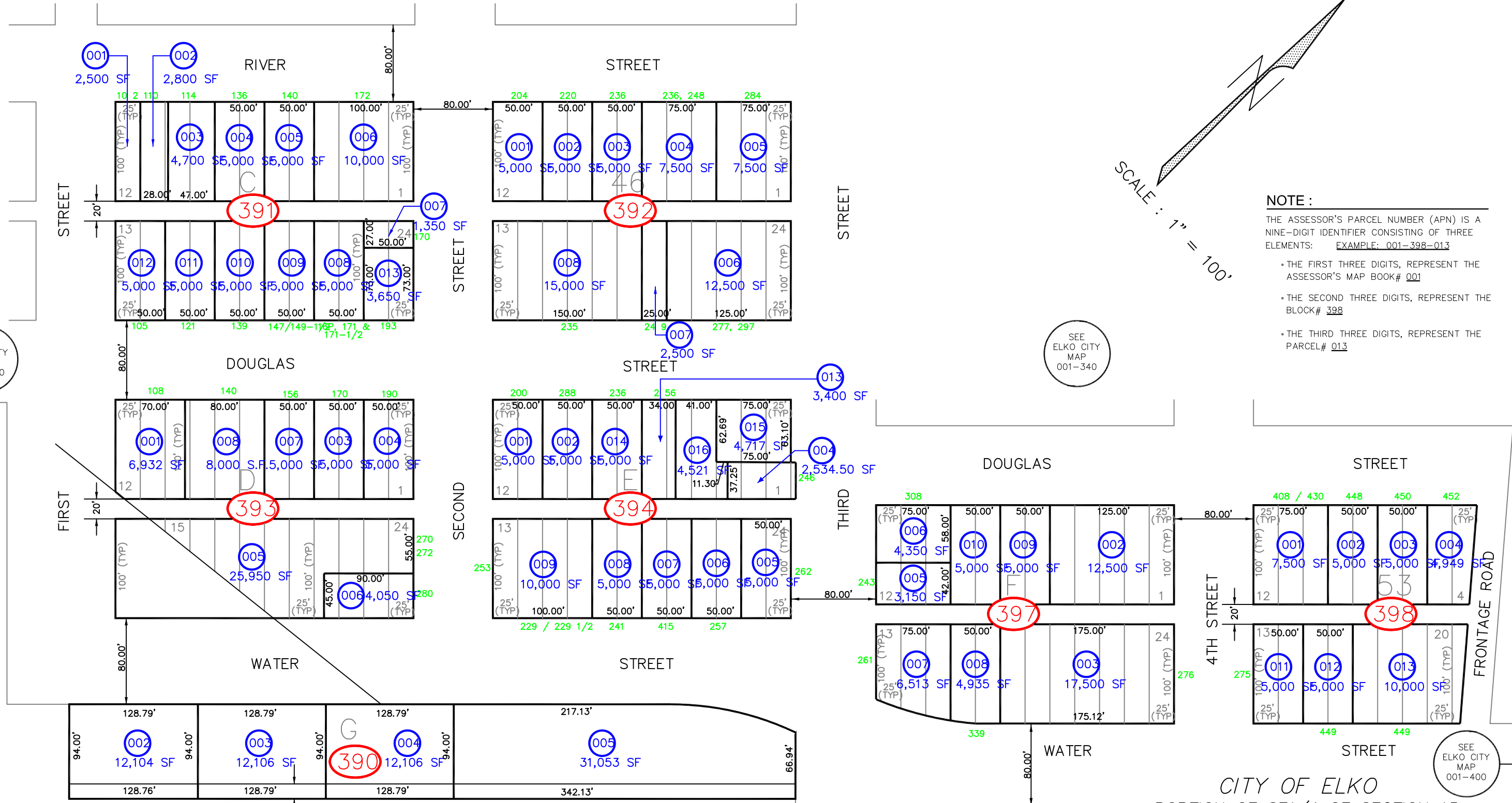
SEE ELKO CITY MAP 001-380

SEE ELKO CITY MAP 001-340

SEE ELKO CITY MAP 001-400

SEE ELKO CITY MAP 001-400

SEE ELKO CITY MAP 001-710



CITY OF ELKO
 PORTION OF SE1/4 OF SECTION 15
 T. 34 N., R. 55 E., M. D. B. & M.
 ELKO COUNTY, NEVADA

FOR ASSESSMENT USE ONLY

DOES NOT REPRESENT A SURVEY
 NO LIABILITY FOR ACCURACY IS ASSURED
 UNLESS APPROVED BY ELKO COUNTY ASSESSOR,
 OTHER USES ARE FORBIDDEN

REVISED 04/19/2016 JLS