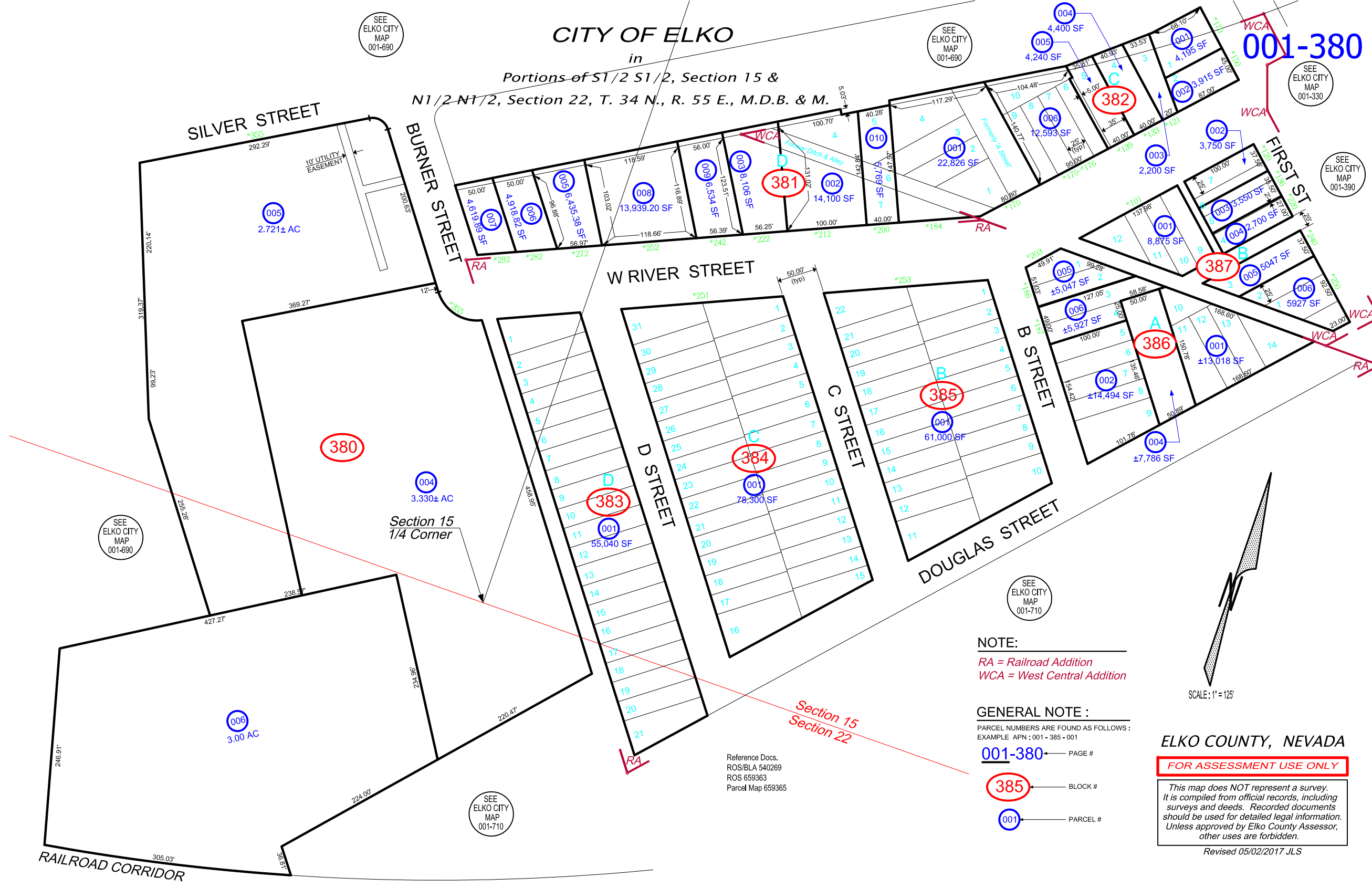


# CITY OF ELKO

in  
Portions of S1/2 S1/2, Section 15 &  
N1/2 N1/2, Section 22, T. 34 N., R. 55 E., M.D.B. & M.



SEE ELKO CITY MAP 001-690

SEE ELKO CITY MAP 001-690

SEE ELKO CITY MAP 001-690

SEE ELKO CITY MAP 001-330

SEE ELKO CITY MAP 001-390

SEE ELKO CITY MAP 001-710

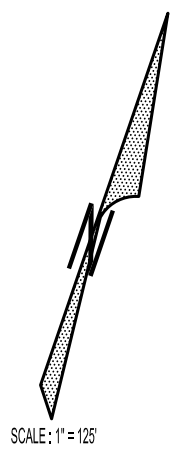
SEE ELKO CITY MAP 001-710

**NOTE:**  
RA = Railroad Addition  
WCA = West Central Addition

**GENERAL NOTE:**  
PARCEL NUMBERS ARE FOUND AS FOLLOWS:  
EXAMPLE APN : 001 - 385 - 001

- 001-380** — PAGE #
- 385** — BLOCK #
- 001** — PARCEL #

Reference Docs.  
ROS/BLA 540269  
ROS 659363  
Parcel Map 659365



**ELKO COUNTY, NEVADA**  
**FOR ASSESSMENT USE ONLY**  
*This map does NOT represent a survey. It is compiled from official records, including surveys and deeds. Recorded documents should be used for detailed legal information. Unless approved by Elko County Assessor, other uses are forbidden.*  
Revised 05/02/2017 JLS