

001-360

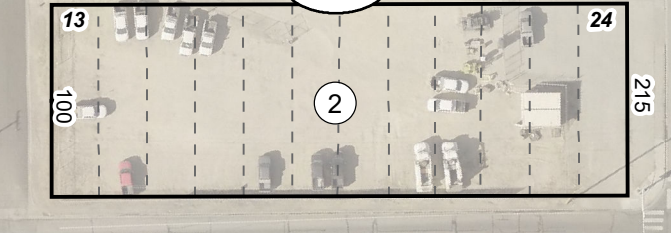
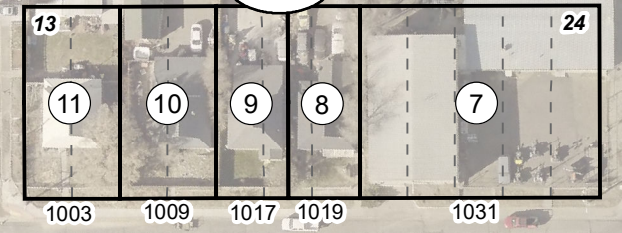
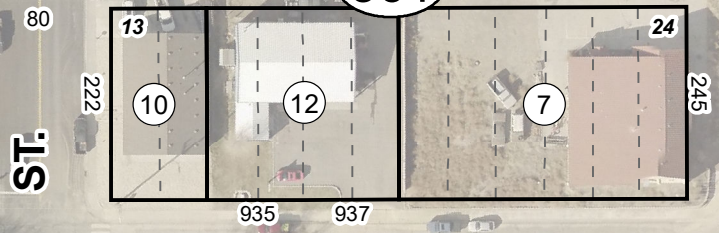
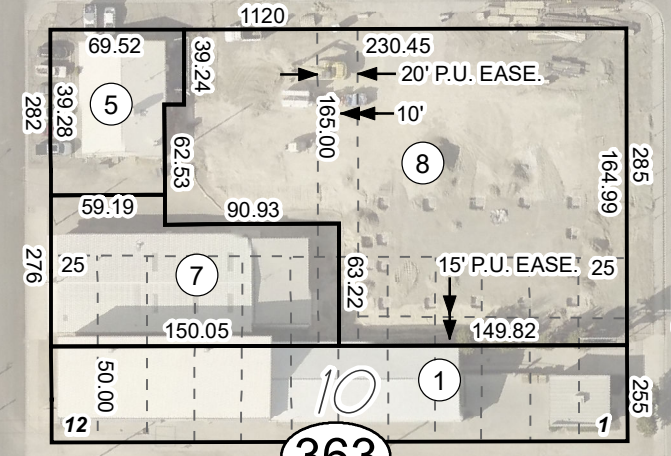
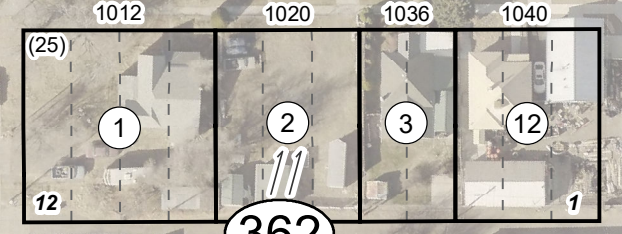
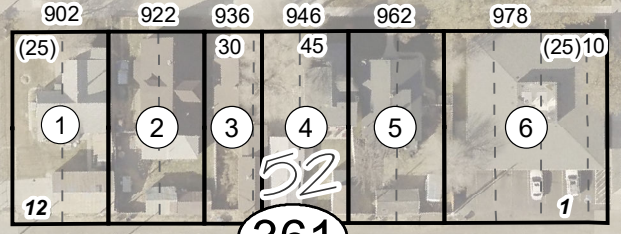
ELKO

COMMERCIAL ST.

28

SEC. 15 T34N - R55E  
SEC. 14

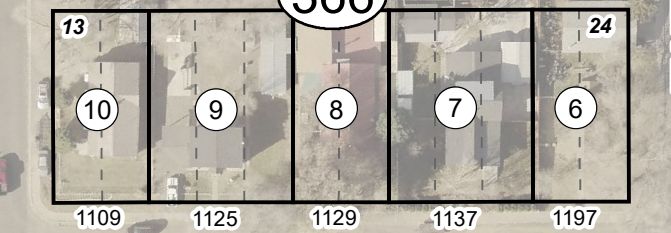
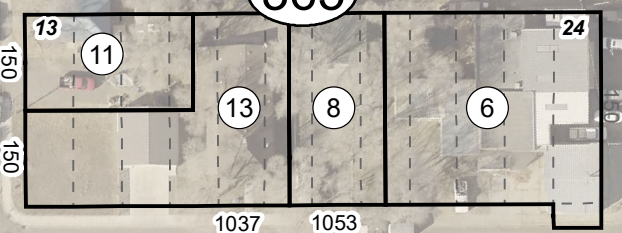
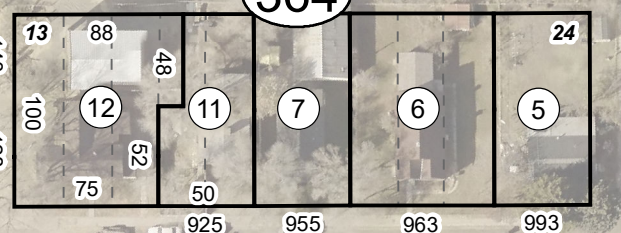
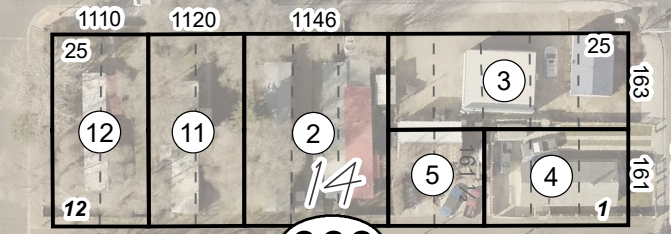
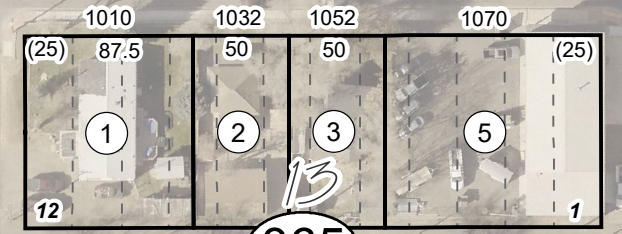
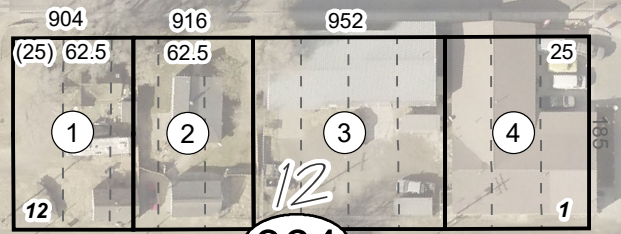
ST.



SILVER ST.

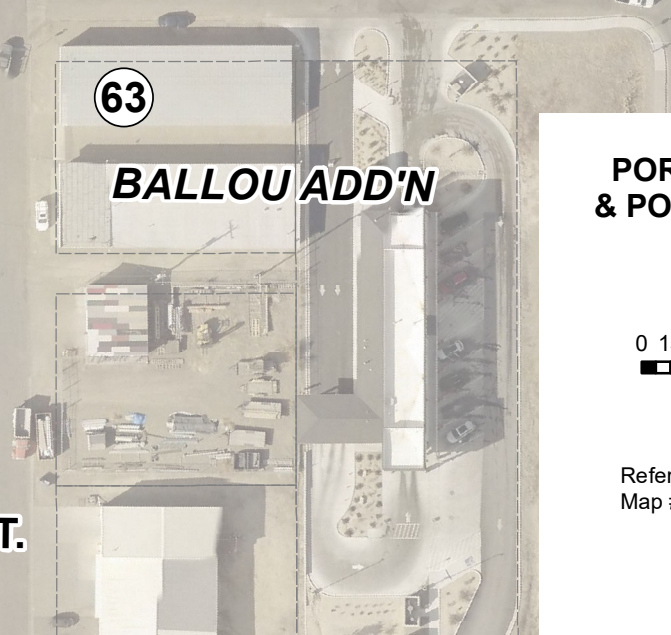
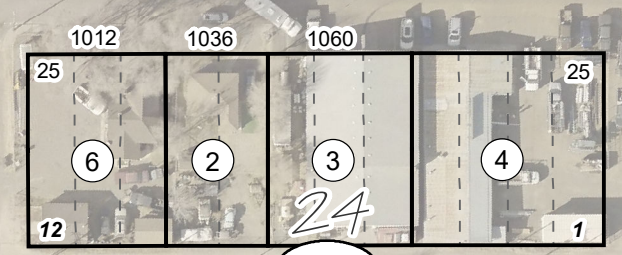
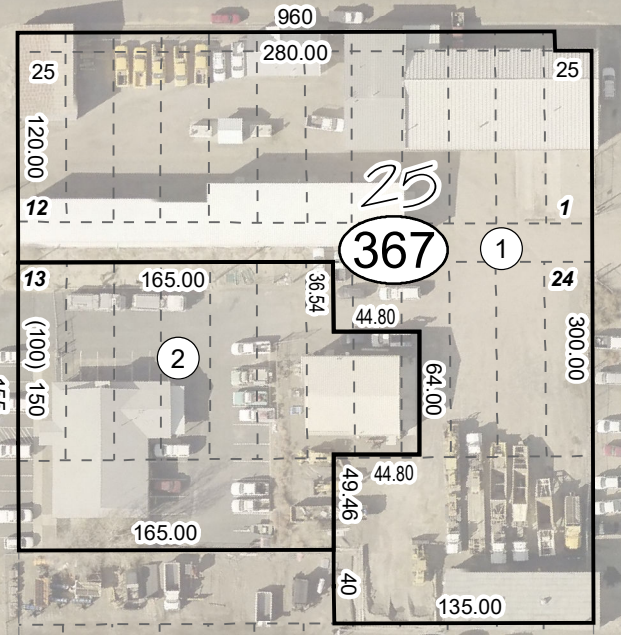
ST.

(FORMER CL W.P.R.R. TRACK - Removed 10/83 for Railroad Relocation)



RIVER ST.

ST.



NINTH

TENTH

ELEVENTH

TWELFTH

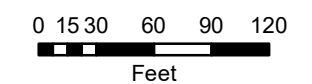
ST.

DOUGLAS

ST.

37

PORTION OF W 1/2 NW 1/4 SECTION 14  
& PORTION OF SE 1/4 NE 1/4 SECTION 15  
T.34N., R55E., M.D.B.&M



Reference Docs:  
Map # 640388, 639712, 699454, 704088, 760104, 770181

Last Revised: 06/26/2020 JLS  
Image: 2019 Pictometry Flyover  
Product of GIS

For assessment use only, does not represent a survey, no liability for accuracy is assured. Other uses forbidden unless approved by Elko County Assessor.