

CITY OF ELKO

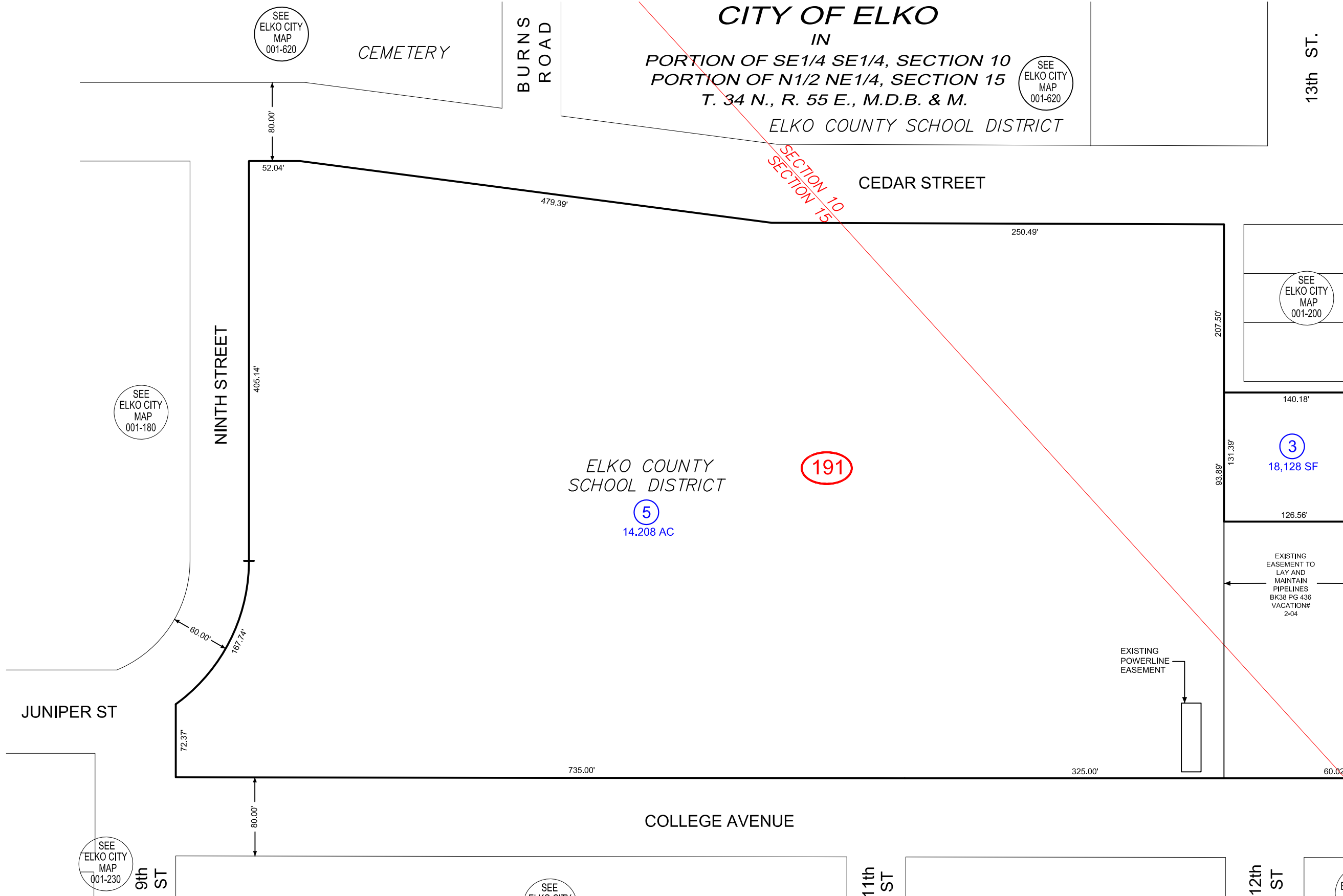
IN

PORTION OF SE1/4 SE1/4, SECTION 10
PORTION OF N1/2 NE1/4, SECTION 15
T. 34 N., R. 55 E., M.D.B. & M.

ELKO COUNTY SCHOOL DISTRICT

001-190

ELKO COUNTY FAIRGROUNDS



NOTE:
SEE RECORDED MAPS
* FILE# 805
* FILE# 473730, 769189
* VACATION# 2-04

SCALE : 1" = 100'

ELKO COUNTY, NEVADA

FOR ASSESSMENT USE ONLY

This map does NOT represent a survey. It is compiled from official records, including surveys and deeds. Recorded documents should be used for detailed legal information. Unless approved by Elko County Assessor, other uses are forbidden.

Revised 10/13/2020 JLS